

Anti-GRIA1 antibody (790-870) (STJ93286)

STJ93286

GENERAL INFORMATION

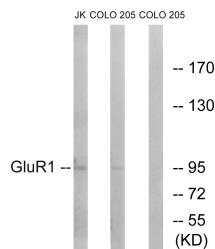
| | |
|--------------------------|--|
| Product Type | Primary antibodies |
| Short Description | Rabbit polyclonal antibody anti-Glutamate Receptor 1 (790-870) is suitable for use in Western Blot, Immunohistochemistry, Immunofluorescence, Immunocytochemistry and ELISA research applications. |
| Applications | WB, IHC-P, IF, ICC, ELISA |
| Host/Source | Rabbit |
| Reactivity | Human, Mouse, Rat |

PRODUCT PROPERTIES

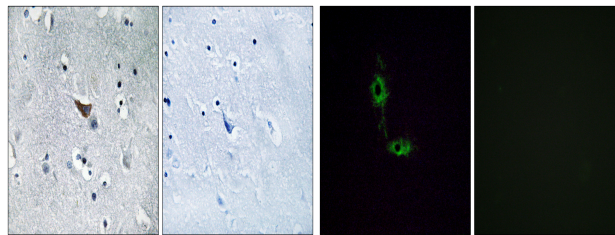
| | |
|----------------------------|--|
| Clonality | Polyclonal |
| Clone ID | |
| Concentration | 1 mg/mL |
| Conjugation | Unconjugated |
| Purification | The antibody was affinity-purified from rabbit anti-serum by affinity-chromatography. |
| Dilution Range | WB 1:500-1:2000 IHC 1:100-1:300 IF 1:200-1:1000 ELISA 1:40000 |
| Formulation | PBS, 50% Glycerol, 0.5% BSA and 0.02% Sodium Azide. |
| Isotype | IgG |
| Storage Instruction | Store at -20°C for up to 1 year from the date of receipt, and avoid repeat freeze-thaw cycles. |

TARGET INFORMATION

| | |
|---------------------------|---|
| Gene ID | 2890 |
| Gene Symbol | GRIA1 |
| Uniprot ID | GRIA1_HUMAN |
| Immunogen | The antiserum was produced against synthesized peptide derived from human GluR1 at amino acid range 816-865 |
| Immunogen Region | 790-870 |
| Specificity | GRIA1 polyclonal antibody (Glutamate Receptor 1) binds to endogenous Glutamate Receptor 1 at the amino acid region 790-870. |
| Immunogen Sequence | |

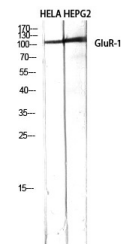


Western blot analysis of lysates from COLO and Jurkat cells, using GluR1 Antibody. The lane on the right is blocked with the synthesized peptide.



Immunohistochemistry analysis of paraffin-embedded human brain tissue, using GluR1 Antibody. The picture on the right is blocked with the synthesized peptide.

Immunofluorescence analysis of HeLa cells, using GluR1 Antibody. The picture on the right is blocked with the synthesized peptide.



Western blot analysis of HELA HEPG2 using GluR-1 Polyclonal Antibody diluted at 1: 500

This product is suitable for in-vitro studies under the RESEARCH USE ONLY [RUO] licence. This product must not be used as for diagnostic or other medical purposes.
St John's Laboratory Ltd, Knowledge Dock Business Centre, University Way, London, E16 2RD | Tel: 0208 223 3081