

Anti-GLP1R antibody (80-160 Internal) (STJ93281)

STJ93281

GENERAL INFORMATION

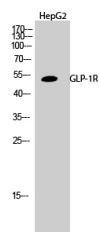
Product Type	Primary antibodies
Short Description	Rabbit polyclonal antibody anti-Glucagon-Like Peptide 1 Receptor (80-160 Internal) is suitable for use in Western Blot, Immunofluorescence, Immunocytochemistry and ELISA research applications.
Applications	WB, IF, ICC, ELISA
Host/Source	Rabbit
Reactivity	Human, Mouse

PRODUCT PROPERTIES

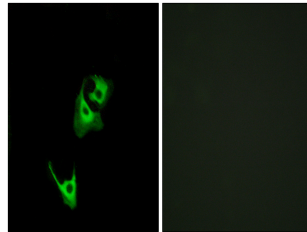
Clonality	Polyclonal
Clone ID	
Concentration	1 mg/mL
Conjugation	Unconjugated
Purification	The antibody was affinity-purified from rabbit anti-serum by affinity-chromatography.
Dilution Range	WB 1:500-1:2000 IF 1:200-1:1000 ELISA 1:5000
Formulation	PBS, 50% Glycerol, 0.5% BSA and 0.02% Sodium Azide.
Isotype	IgG
Storage Instruction	Store at -20°C for up to 1 year from the date of receipt, and avoid repeat freeze-thaw cycles.

TARGET INFORMATION

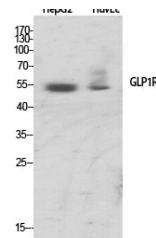
Gene ID	2740
Gene Symbol	GLP1R
Uniprot ID	GLP1R_HUMAN
Immunogen Region	The antiserum was produced against synthesized peptide derived from human GLP1R at amino acid range 101-150
Immunogen Region	80-160 Internal
Specificity	GLP1R polyclonal antibody (Glucagon-Like Peptide 1 Receptor) binds to endogenous Glucagon-Like Peptide 1 Receptor at the amino acid region 80-160 Internal.
Immunogen Sequence	



Western blot analysis of HepG2 cells using GLP-1R Polyclonal Antibody



Immunofluorescence analysis of HeLa cells, using GLP1R Antibody. The picture on the right is blocked with the synthesized peptide.



Western blot analysis of various cells using GLP-1R Polyclonal Antibody

This product is suitable for in-vitro studies under the RESEARCH USE ONLY [RUO] licence. This product must not be used as for diagnostic or other medical purposes.
St John's Laboratory Ltd, Knowledge Dock Business Centre, University Way, London, E16 2RD | Tel: 0208 223 3081