

Anti-GNE antibody (570-650 C-Term) (STJ93278)

STJ93278

GENERAL INFORMATION

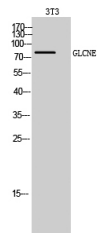
Product Type	Primary antibodies
Short Description	Rabbit polyclonal antibody anti-Bifunctional Udp-N-Acetylglucosamine 2-Epimerase/N-Acetylmannosamine Kinase (570-650 C-Term) is suitable for use in Western Blot, Immunohistochemistry, Immunofluorescence and ELISA research applications.
Applications	WB, IHC-P, IF-P, ELISA
Host/Source	Rabbit
Reactivity	Human, Mouse, Rat

PRODUCT PROPERTIES

Clonality	Polyclonal
Clone ID	
Concentration	1 mg/mL
Conjugation	Unconjugated
Purification	The antibody was affinity-purified from rabbit anti-serum by affinity-chromatography.
Dilution Range	WB 1:500-1:2000 IHC 1:100-1:300 ELISA 1:5000
Formulation	PBS, 50% Glycerol, 0.5% BSA and 0.02% Sodium Azide.
Isotype	IgG
Storage Instruction	Store at -20°C for up to 1 year from the date of receipt, and avoid repeat freeze-thaw cycles.

TARGET INFORMATION

Gene ID	10020
Gene Symbol	GNE
Uniprot ID	GLCNE_HUMAN
Immunogen Region	The antiserum was produced against synthesized peptide derived from human GNE at amino acid range 592-641 570-650 C-Term
Specificity	GNE polyclonal antibody (Bifunctional Udp-N-Acetylglucosamine 2-Epimerase/N-Acetylmannosamine Kinase) binds to endogenous Bifunctional Udp-N-Acetylglucosamine 2-Epimerase/N-Acetylmannosamine Kinase at the amino acid region 570-650 C-Term.
Immunogen Sequence	



Western blot analysis of 3T3 cells using GLCNE Polyclonal Antibody diluted at 1: 500

This product is suitable for in-vitro studies under the RESEARCH USE ONLY [RUO] licence. This product must not be used as for diagnostic or other medical purposes.
St John's Laboratory Ltd, Knowledge Dock Business Centre, University Way, London, E16 2RD | Tel: 0208 223 3081