

Anti-GK1/3 antibody (40-120 N-Term) (STJ93276)

STJ93276

GENERAL INFORMATION

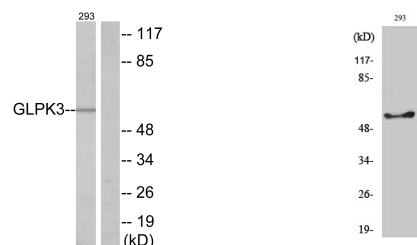
Product Type	Primary antibodies
Short Description	Rabbit polyclonal antibody anti-Glycerol kinase and Glycerol kinase 3 (40-120 N-Term) is suitable for use in Western Blot, Immunohistochemistry, Immunofluorescence and ELISA research applications.
Applications	WB, IHC-P, IF-P, ELISA
Host/Source	Rabbit
Reactivity	Human, Rat, Mouse

PRODUCT PROPERTIES

Clonality	Polyclonal
Clone ID	
Concentration	1 mg/mL
Conjugation	Unconjugated
Purification	The antibody was affinity-purified from rabbit anti-serum by affinity-chromatography.
Dilution Range	WB 1:500-1:2000 IHC 1:100-1:300 ELISA 1:40000
Formulation	PBS, 50% Glycerol, 0.5% BSA and 0.02% Sodium Azide.
Isotype	IgG
Storage Instruction	Store at -20°C for up to 1 year from the date of receipt, and avoid repeat freeze-thaw cycles.

TARGET INFORMATION

Gene ID	NA 2710
Gene Symbol	GK3P GK
Uniprot ID	GLPK3_HUMAN GLPK_HUMAN
Immunogen Region	The antiserum was produced against synthesized peptide derived from human GK3 at amino acid range 21-70 40-120 N-Term
Specificity	GK1/3 polyclonal antibody (Glycerol kinase and Glycerol kinase 3) binds to endogenous Glycerol kinase and Glycerol kinase 3 at the amino acid region 40-120 N-Term.
Immunogen Sequence	



Western blot analysis of lysates from 293 cells, using GK3 Antibody. The lane on the right is blocked with the synthesized peptide.

Western blot analysis of various cells using GK1/3 Polyclonal Antibody

This product is suitable for in-vitro studies under the RESEARCH USE ONLY [RUO] licence. This product must not be used as for diagnostic or other medical purposes.
St John's Laboratory Ltd, Knowledge Dock Business Centre, University Way, London, E16 2RD | Tel: 0208 223 3081