

Anti-GK antibody (430-510 C-Term) (STJ93275)

STJ93275

GENERAL INFORMATION

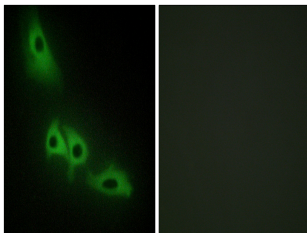
Product Type	Primary antibodies
Short Description	Rabbit polyclonal antibody anti-Glycerol Kinase (430-510 C-Term) is suitable for use in Western Blot, Immunofluorescence, Immunocytochemistry and ELISA research applications.
Applications	WB, IF, ICC, ELISA
Host/Source	Rabbit
Reactivity	Human, Mouse, Rat

PRODUCT PROPERTIES

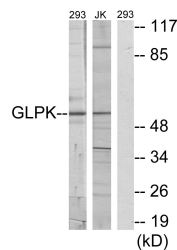
Clonality	Polyclonal
Clone ID	
Concentration	1 mg/mL
Conjugation	Unconjugated
Purification	The antibody was affinity-purified from rabbit anti-serum by affinity-chromatography.
Dilution Range	WB 1:500-1:2000 IF 1:200-1:1000 ELISA 1:20000
Formulation	PBS, 50% Glycerol, 0.5% BSA and 0.02% Sodium Azide.
Isotype	IgG
Storage Instruction	Store at -20°C for up to 1 year from the date of receipt, and avoid repeat freeze-thaw cycles.

TARGET INFORMATION

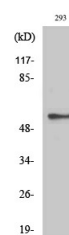
Gene ID	2710
Gene Symbol	GK
Uniprot ID	GLPK_HUMAN
Immunogen	The antiserum was produced against synthesized peptide derived from human GK at amino acid range 461-510
Immunogen Region	430-510 C-Term
Specificity	GK polyclonal antibody (Glycerol Kinase) binds to endogenous Glycerol Kinase at the amino acid region 430-510 C-Term.
Immunogen Sequence	



Immunofluorescence analysis of HeLa cells, using GK Antibody. The picture on the right is blocked with the synthesized peptide.



Western blot analysis of lysates from 293 and Jurkat cells, using GK Antibody. The lane on the right is blocked with the synthesized peptide.



Western blot analysis of various cells using GK1 Polyclonal Antibody diluted at 1: 2000