

Anti-GIT2 antibody (330-410 Internal) (STJ93274)

STJ93274

GENERAL INFORMATION

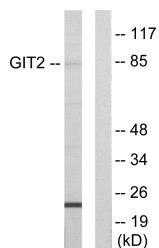
Product Type	Primary antibodies
Short Description	Rabbit polyclonal antibody anti-Arf Gtpase-Activating Protein Git2 (330-410 Internal) is suitable for use in Western Blot, Immunohistochemistry, Immunofluorescence and ELISA research applications.
Applications	WB, IHC-P, IF-P, ELISA
Host/Source	Rabbit
Reactivity	Human, Mouse, Rat

PRODUCT PROPERTIES

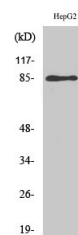
Clonality	Polyclonal
Clone ID	
Concentration	1 mg/mL
Conjugation	Unconjugated
Purification	The antibody was affinity-purified from rabbit anti-serum by affinity-chromatography.
Dilution	WB 1:500-1:2000
Range	ELISA 1:10000
Formulation	PBS, 50% Glycerol, 0.5% BSA and 0.02% Sodium Azide.
Isotype	IgG
Storage	Store at -20°C for up to 1 year from the date of receipt, and avoid repeat freeze-thaw cycles.
Instruction	

TARGET INFORMATION

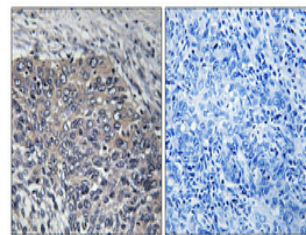
Gene ID	9815
Gene Symbol	GIT2
Uniprot ID	GIT2_HUMAN
Immunogen	The antiserum was produced against synthesized peptide derived from human GIT2 at amino acid range 361-410
Immunogen Region	330-410 Internal
Specificity	GIT2 polyclonal antibody (Arf Gtpase-Activating Protein Git2) binds to endogenous Arf Gtpase-Activating Protein Git2 at the amino acid region 330-410 Internal.
Immunogen Sequence	



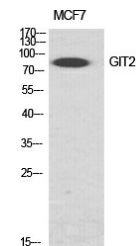
Western blot analysis of lysates from HepG2 cells, using GIT2 Antibody. The lane on the right is blocked with the synthesized peptide.



Western blot analysis of HepG2 cells using GIT2 Polyclonal Antibody diluted at 1: 1000 cells nucleus extracted by Minute TM Cytoplasmic and Nuclear Fractionation kit (SC-003, Inventibiotec, MN, USA).



Immunohistochemical analysis of paraffin-embedded Human cervix cancer. Antibody was diluted at 1:100 (4°C overnight). High-pressure and temperature Tris-EDTA, pH8.0 was used for antigen retrieval. Negative control (right) obtained from antibody was pre-absorbed by immunogen peptide.



Western blot analysis of various cells using GIT2 Polyclonal Antibody diluted at 1: 1000 cells nucleus extracted by Minute TM Cytoplasmic and Nuclear Fractionation kit (SC-003, Inventibiotec, MN, USA).

This product is suitable for in-vitro studies under the RESEARCH USE ONLY [RUO] licence. This product must not be used as for diagnostic or other medical purposes.
 St John's Laboratory Ltd, Knowledge Dock Business Centre, University Way, London, E16 2RD | Tel: 0208 223 3081