

Anti-GIPR antibody (60-140 Internal) (STJ93271)

STJ93271

GENERAL INFORMATION

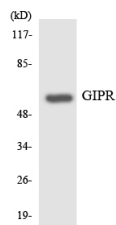
Product Type	Primary antibodies
Short Description	Rabbit polyclonal antibody anti-Gastric Inhibitory Polypeptide Receptor (60-140 Internal) is suitable for use in Western Blot, Immunohistochemistry, Immunofluorescence, Immunocytochemistry and ELISA research applications.
Applications	WB, IHC-P, IF, ICC, ELISA
Host/Source	Rabbit
Reactivity	Human, Rat, Mouse

PRODUCT PROPERTIES

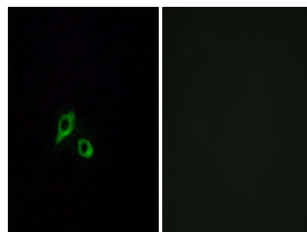
Clonality	Polyclonal
Clone ID	
Concentration	1 mg/mL
Conjugation	Unconjugated
Purification	The antibody was affinity-purified from rabbit anti-serum by affinity-chromatography.
Dilution	WB 1:500-1:2000
Range	IHC 1:100-1:300 IF 1:200-1:1000 ELISA 1:20000
Formulation	PBS, 50% Glycerol, 0.5% BSA and 0.02% Sodium Azide.
Isotype	IgG
Storage Instruction	Store at -20°C for up to 1 year from the date of receipt, and avoid repeat freeze-thaw cycles.

TARGET INFORMATION

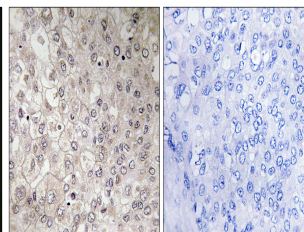
Gene ID	2696
Gene Symbol	GIPR
Uniprot ID	GIPR_HUMAN
Immunogen	The antiserum was produced against synthesized peptide derived from human GIPR at amino acid range 93-142
Immunogen Region	60-140 Internal
Specificity	GIPR polyclonal antibody (Gastric Inhibitory Polypeptide Receptor) binds to endogenous Gastric Inhibitory Polypeptide Receptor at the amino acid region 60-140 Internal.
Immunogen Sequence	



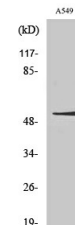
Western blot analysis of the lysates from HT-29 cells using GIPR antibody.



Immunofluorescence analysis of MCF7 cells, using GIPR Antibody. The picture on the right is blocked with the synthesized peptide.



Immunohistochemistry analysis of paraffin-embedded human liver carcinoma tissue, using GIPR Antibody. The picture on the right is blocked with the synthesized peptide.



Western blot analysis of various cells using GIPR Polyclonal Antibody

This product is suitable for in-vitro studies under the RESEARCH USE ONLY [RUO] licence. This product must not be used as for diagnostic or other medical purposes.
St John's Laboratory Ltd, Knowledge Dock Business Centre, University Way, London, E16 2RD | Tel: 0208 223 3081