

Anti-GIMAP5 antibody (200-280 C-Term) (STJ93270)

STJ93270

GENERAL INFORMATION

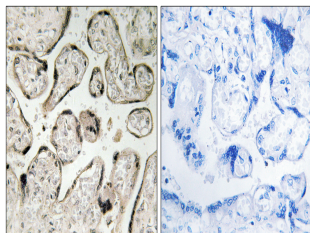
Product Type	Primary antibodies
Short Description	Rabbit polyclonal antibody anti-Gtpase Imap Family Member 5 (200-280 C-Term) is suitable for use in Western Blot, Immunohistochemistry, Immunofluorescence and ELISA research applications.
Applications	WB, IHC-P, IF-P, ELISA
Host/Source	Rabbit
Reactivity	Human, Rat, Mouse

PRODUCT PROPERTIES

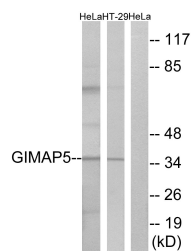
Clonality	Polyclonal
Clone ID	
Concentration	1 mg/mL
Conjugation	Unconjugated
Purification	The antibody was affinity-purified from rabbit anti-serum by affinity-chromatography.
Dilution Range	WB 1:500-1:2000 IHC 1:100-1:300 ELISA 1:20000
Formulation	PBS, 50% Glycerol, 0.5% BSA and 0.02% Sodium Azide.
Isotype	IgG
Storage Instruction	Store at -20°C for up to 1 year from the date of receipt, and avoid repeat freeze-thaw cycles.

TARGET INFORMATION

Gene ID	55340
Gene Symbol	GIMAP5
Uniprot ID	GIMA5_HUMAN
Immunogen	The antiserum was produced against synthesized peptide derived from human GIMAP5 at amino acid range 231-280
Immunogen Region	200-280 C-Term
Specificity	GIMAP5 polyclonal antibody (Gtpase Imap Family Member 5) binds to endogenous Gtpase Imap Family Member 5 at the amino acid region 200-280 C-Term.
Immunogen Sequence	



Immunohistochemistry analysis of paraffin-embedded human placenta tissue, using GIMAP5 Antibody. The picture on the right is blocked with the synthesized peptide.



Western blot analysis of lysates from HeLa and HT-29 cells, using GIMAP5 Antibody. The lane on the right is blocked with the synthesized peptide.



Western blot analysis of various cells using GIMAP5 Polyclonal Antibody