

Anti-GIMAP4 antibody (100-180 Internal) (STJ93269)

STJ93269

GENERAL INFORMATION

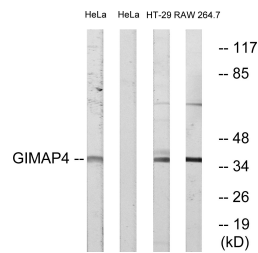
Product Type	Primary antibodies
Short Description	Rabbit polyclonal antibody anti-Gtpase Imap Family Member 4 (100-180 Internal) is suitable for use in Western Blot, Immunohistochemistry, Immunofluorescence and ELISA research applications.
Applications	WB, IHC-P, IF-P, ELISA
Host/Source	Rabbit
Reactivity	Human, Rat, Mouse

PRODUCT PROPERTIES

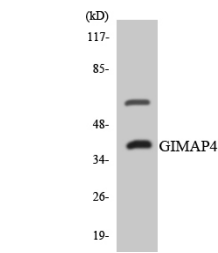
Clonality	Polyclonal
Clone ID	
Concentration	1 mg/mL
Conjugation	Unconjugated
Purification	The antibody was affinity-purified from rabbit anti-serum by affinity-chromatography.
Dilution Range	WB 1:500-1:2000 IHC 1:100-1:300 ELISA 1:5000
Formulation	PBS, 50% Glycerol, 0.5% BSA and 0.02% Sodium Azide.
Isotype	IgG
Storage Instruction	Store at -20°C for up to 1 year from the date of receipt, and avoid repeat freeze-thaw cycles.

TARGET INFORMATION

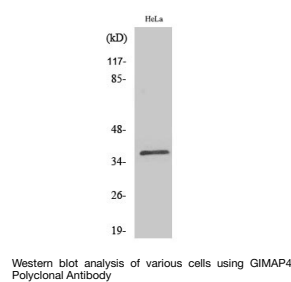
Gene ID	55303
Gene Symbol	GIMAP4
Uniprot ID	GIMA4_HUMAN
Immunogen	The antiserum was produced against synthesized peptide derived from human GIMAP4 at amino acid range 131-180
Immunogen Region	100-180 Internal
Specificity	GIMAP4 polyclonal antibody (Gtpase Imap Family Member 4) binds to endogenous Gtpase Imap Family Member 4 at the amino acid region 100-180 Internal.
Immunogen Sequence	



Western blot analysis of lysates from HeLa, HT-29, and RAW264.7 cells, using GIMAP4 Antibody. The lane on the right is blocked with the synthesized peptide.



Western blot analysis of the lysates from COLO205 cells using GIMAP4 antibody.



Western blot analysis of various cells using GIMAP4 Polyclonal Antibody.

This product is suitable for in-vitro studies under the RESEARCH USE ONLY [RUO] licence. This product must not be used as for diagnostic or other medical purposes.
St John's Laboratory Ltd, Knowledge Dock Business Centre, University Way, London, E16 2RD | Tel: 0208 223 3081