

Anti-GIMAP2 antibody (180-260 Internal) (STJ93268)

STJ93268

GENERAL INFORMATION

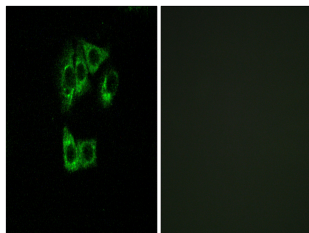
Product Type	Primary antibodies
Short Description	Rabbit polyclonal antibody anti-Gtpase Imap Family Member 2 (180-260 Internal) is suitable for use in Western Blot, Immunofluorescence, Immunocytochemistry and ELISA research applications.
Applications	WB, IF, ICC, ELISA
Host/Source	Rabbit
Reactivity	Human, Rat, Mouse

PRODUCT PROPERTIES

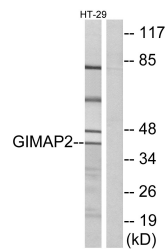
Clonality	Polyclonal
Clone ID	
Concentration	1 mg/mL
Conjugation	Unconjugated
Purification	The antibody was affinity-purified from rabbit anti-serum by affinity-chromatography.
Dilution Range	WB 1:500-1:2000 IF 1:200-1:1000 ELISA 1:20000
Formulation	PBS, 50% Glycerol, 0.5% BSA and 0.02% Sodium Azide.
Isotype	IgG
Storage Instruction	Store at -20°C for up to 1 year from the date of receipt, and avoid repeat freeze-thaw cycles.

TARGET INFORMATION

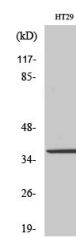
Gene ID	26157
Gene Symbol	GIMAP2
Uniprot ID	GIMA2_HUMAN
Immunogen	The antiserum was produced against synthesized peptide derived from human GIMAP2 at amino acid range 201-250
Immunogen Region	180-260 Internal
Specificity	GIMAP2 polyclonal antibody (Gtpase Imap Family Member 2) binds to endogenous Gtpase Imap Family Member 2 at the amino acid region 180-260 Internal.
Immunogen Sequence	



Immunofluorescence analysis of A549 cells, using GIMAP2 Antibody. The picture on the right is blocked with the synthesized peptide.



Western blot analysis of lysates from HT-29 cells, using GIMAP2 Antibody. The lane on the right is blocked with the synthesized peptide.



Western blot analysis of various cells using GIMAP2 Polyclonal Antibody

This product is suitable for in-vitro studies under the RESEARCH USE ONLY [RUO] licence. This product must not be used as for diagnostic or other medical purposes.
St John's Laboratory Ltd, Knowledge Dock Business Centre, University Way, London, E16 2RD | Tel: 0208 223 3081