

Anti-GHITM antibody (1-80 Internal) (STJ93264)

STJ93264

GENERAL INFORMATION

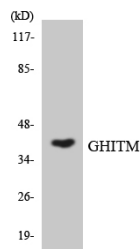
Product Type	Primary antibodies
Short Description	Rabbit polyclonal antibody anti-Growth Hormone-Inducible Transmembrane Protein (1-80 Internal) is suitable for use in Western Blot, Immunohistochemistry, Immunofluorescence and ELISA research applications.
Applications	WB, IHC-P, IF-P, ELISA
Host/Source	Rabbit
Reactivity	Human, Rat, Mouse

PRODUCT PROPERTIES

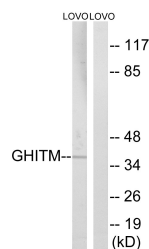
Clonality	Polyclonal
Clone ID	
Concentration	1 mg/mL
Conjugation	Unconjugated
Purification	The antibody was affinity-purified from rabbit anti-serum by affinity-chromatography.
Dilution Range	WB 1:500-1:2000 IHC 1:100-1:300 ELISA 1:10000
Formulation	PBS, 50% Glycerol, 0.5% BSA and 0.02% Sodium Azide.
Isotype	IgG
Storage Instruction	Store at -20°C for up to 1 year from the date of receipt, and avoid repeat freeze-thaw cycles.

TARGET INFORMATION

Gene ID	27069
Gene Symbol	GHITM
Uniprot ID	GHITM_HUMAN
Immunogen	The antiserum was produced against synthesized peptide derived from human GHITM at amino acid range 31-80
Immunogen Region	1-80 Internal
Specificity	GHITM polyclonal antibody (Growth Hormone-Inducible Transmembrane Protein) binds to endogenous Growth Hormone-Inducible Transmembrane Protein at the amino acid region 1-80 Internal.
Immunogen Sequence	



Western blot analysis of the lysates from HepG2 cells using GHITM antibody.



Western blot analysis of lysates from LOVO cells, using GHITM Antibody. The lane on the right is blocked with the synthesized peptide.

This product is suitable for in-vitro studies under the RESEARCH USE ONLY [RUO] licence. This product must not be used as for diagnostic or other medical purposes.
St John's Laboratory Ltd, Knowledge Dock Business Centre, University Way, London, E16 2RD | Tel: 0208 223 3081