

Anti-GFRA4 antibody (110-190 Internal) (STJ93262)

STJ93262

GENERAL INFORMATION

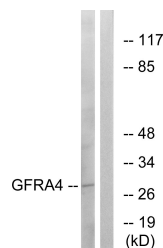
Product Type	Primary antibodies
Short Description	Rabbit polyclonal antibody anti-Gdnf Family Receptor Alpha-4 (110-190 Internal) is suitable for use in Western Blot and ELISA research applications.
Applications	WB, ELISA
Host/Source	Rabbit
Reactivity	Human, Rat, Mouse

PRODUCT PROPERTIES

Clonality	Polyclonal
Clone ID	
Concentration	1 mg/mL
Conjugation	Unconjugated
Purification	The antibody was affinity-purified from rabbit anti-serum by affinity-chromatography.
Dilution Range	WB 1:500-1:2000 ELISA 1:10000
Formulation	PBS, 50% Glycerol, 0.5% BSA and 0.02% Sodium Azide.
Isotype	IgG
Storage	Store at -20°C for up to 1 year from the date of receipt, and avoid repeat freeze-thaw cycles.
Instruction	

TARGET INFORMATION

Gene ID	64096
Gene Symbol	GFRA4
Uniprot ID	GFRA4_HUMAN
Immunogen	The antiserum was produced against synthesized peptide derived from human GFRA4 at amino acid range 141-190
Immunogen Region	110-190 Internal
Specificity	GFRA4 polyclonal antibody (Gdnf Family Receptor Alpha-4) binds to endogenous Gdnf Family Receptor Alpha-4 at the amino acid region 110-190 Internal.
Immunogen Sequence	



Western blot analysis of lysates from HeLa cells, using GFRA4 Antibody. The lane on the right is blocked with the synthesized peptide.