

Anti-GCHFR antibody (1-80 Internal) (STJ93260)

STJ93260

GENERAL INFORMATION

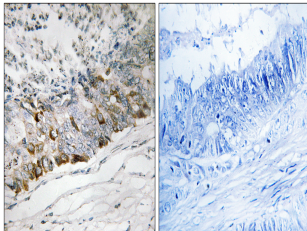
Product Type	Primary antibodies
Short Description	Rabbit polyclonal antibody anti-Gtp Cyclohydrolase 1 Feedback Regulatory Protein (1-80 Internal) is suitable for use in Immunohistochemistry, Immunofluorescence and ELISA research applications.
Applications	IHC-P, IF-P, ELISA
Host/Source	Rabbit
Reactivity	Human, Rat

PRODUCT PROPERTIES

Clonality	Polyclonal
Clone ID	
Concentration	1 mg/mL
Conjugation	Unconjugated
Purification	The antibody was affinity-purified from rabbit anti-serum by affinity-chromatography.
Dilution	IHC 1:100-1:300
Range	ELISA 1:10000
Formulation	PBS, 50% Glycerol, 0.5% BSA and 0.02% Sodium Azide.
Isotype	IgG
Storage	Store at -20°C for up to 1 year from the date of receipt, and avoid repeat freeze-thaw cycles.
Instruction	

TARGET INFORMATION

Gene ID	2644
Gene Symbol	GCHFR
Uniprot ID	GFRP_HUMAN
Immunogen	The antiserum was produced against synthesized peptide derived from human GCHFR at amino acid range 31-80
Immunogen Region	1-80 Internal
Specificity	GCHFR polyclonal antibody (Gtp Cyclohydrolase 1 Feedback Regulatory Protein) binds to endogenous Gtp Cyclohydrolase 1 Feedback Regulatory Protein at the amino acid region 1-80 Internal.
Immunogen Sequence	



Immunohistochemistry analysis of paraffin-embedded human colon carcinoma tissue, using GCHFR Antibody. The picture on the right is blocked with the synthesized peptide.