

Anti-DDX20 antibody (250-330 Internal) (STJ93258)

STJ93258

GENERAL INFORMATION

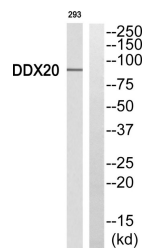
| | |
|--------------------------|-------------------------------------------------------------------------------------------------------------------------------------------------------------------|
| Product Type | Primary antibodies |
| Short Description | Rabbit polyclonal antibody anti-Probable Atp-Dependent Rna Helicase Ddx20 (250-330 Internal) is suitable for use in Western Blot and ELISA research applications. |
| Applications | WB, ELISA |
| Host/Source | Rabbit |
| Reactivity | Human, Mouse |

PRODUCT PROPERTIES

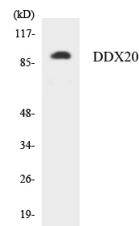
| | |
|----------------------------|------------------------------------------------------------------------------------------------|
| Clonality | Polyclonal |
| Clone ID | |
| Concentration | 1 mg/mL |
| Conjugation | Unconjugated |
| Purification | The antibody was affinity-purified from rabbit anti-serum by affinity-chromatography. |
| Dilution Range | WB 1:500-1:2000 ELISA 1:40000 |
| Formulation | PBS, 50% Glycerol, 0.5% BSA and 0.02% Sodium Azide. |
| Isotype | IgG |
| Storage Instruction | Store at -20°C for up to 1 year from the date of receipt, and avoid repeat freeze-thaw cycles. |

TARGET INFORMATION

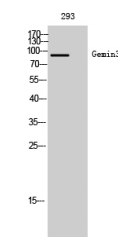
| | |
|---------------------------|--------------------------------------------------------------------------------------------------------------------------------------------------------------------------------|
| Gene ID | 11218 |
| Gene Symbol | DDX20 |
| Uniprot ID | DDX20_HUMAN |
| Immunogen | The antiserum was produced against synthesized peptide derived from human DDX20 at amino acid range 273-322 |
| Immunogen Region | 250-330 Internal |
| Specificity | DDX20 polyclonal antibody (Probable Atp-Dependent Rna Helicase Ddx20) binds to endogenous Probable Atp-Dependent Rna Helicase Ddx20 at the amino acid region 250-330 Internal. |
| Immunogen Sequence | |



Western blot analysis of DDX20 Antibody. The lane on the right is blocked with the DDX20 peptide.



Western blot analysis of the lysates from K562 cells using DDX20 antibody.



Western blot analysis of 293 cells using Gemin3 Polyclonal Antibody.

This product is suitable for in-vitro studies under the RESEARCH USE ONLY [RUO] licence. This product must not be used as for diagnostic or other medical purposes.
St John's Laboratory Ltd, Knowledge Dock Business Centre, University Way, London, E16 2RD | Tel: 0208 223 3081