

## Anti-MMP9 antibody (620-700 C-Term) (STJ93257)

STJ93257

### GENERAL INFORMATION

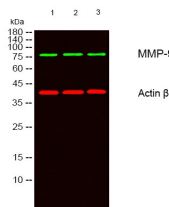
<b>Product Type</b>	Primary antibodies
<b>Short Description</b>	Rabbit polyclonal antibody anti-Matrix Metalloproteinase-9 (620-700 C-Term) is suitable for use in Western Blot, Immunohistochemistry, Immunofluorescence, Immunocytochemistry and ELISA research applications.
<b>Applications</b>	WB, IHC-P, IF, ICC, ELISA
<b>Host/Source</b>	Rabbit
<b>Reactivity</b>	Human, Mouse, Rat

### PRODUCT PROPERTIES

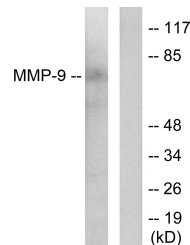
<b>Clonality</b>	Polyclonal
<b>Clone ID</b>	
<b>Concentration</b>	1 mg/mL
<b>Conjugation</b>	Unconjugated
<b>Purification</b>	The antibody was affinity-purified from rabbit anti-serum by affinity-chromatography.
<b>Dilution Range</b>	WB 1:500-1:2000 IHC 1:100-1:300 IF 1:200-1:1000 ELISA 1:20000
<b>Formulation</b>	PBS, 50% Glycerol, 0.5% BSA and 0.02% Sodium Azide.
<b>Isotype</b>	IgG
<b>Storage Instruction</b>	Store at -20°C for up to 1 year from the date of receipt, and avoid repeat freeze-thaw cycles.

### TARGET INFORMATION

<b>Gene ID</b>	4318
<b>Gene Symbol</b>	MMP9
<b>Uniprot ID</b>	MMP9_HUMAN
<b>Immunogen</b>	The antiserum was produced against synthesized peptide derived from human MMP-9 at amino acid range 651-700
<b>Immunogen Region</b>	620-700 C-Term
<b>Specificity</b>	MMP9 polyclonal antibody (Matrix Metalloproteinase-9) binds to endogenous Matrix Metalloproteinase-9 at the amino acid region 620-700 C-Term.
<b>Immunogen Sequence</b>	



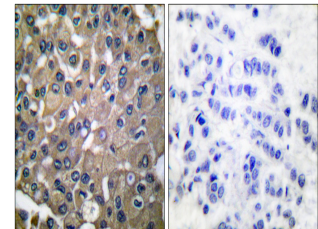
Western blot analysis of lysates from 1) 293, 2) HEPG2, 3) K562 cells. (Green) primary antibody was diluted at 1:1000, 4°C over night, secondary antibody (cat: (NA) was diluted at 1:10000, 37°C 1hour. (Red) Actin Beta monoclonal antibody (537) (cat: (STJ96930) antibody was diluted at 1:5000 as loading control, 4°C over night, secondary antibody (cat: (NA) was diluted at 1:10000, 37°C 1hour.



Western blot analysis of lysates from HepG2 cells, using MMP-9 Antibody. The lane on the right is blocked with the synthesized peptide.



Western blot analysis of HepG2 cells using MMP-9 Polyclonal Antibody diluted at 1: 1000



Immunohistochemistry analysis of paraffin-embedded human breast carcinoma tissue, using MMP-9 Antibody. The picture on the right is blocked with the synthesized peptide.

This product is suitable for in-vitro studies under the RESEARCH USE ONLY [RUO] licence. This product must not be used as for diagnostic or other medical purposes.

St John's Laboratory Ltd, Knowledge Dock Business Centre, University Way, London, E16 2RD | Tel: 0208 223 3081