

Anti-GDF15 antibody (1-80 Internal) (STJ93253)

STJ93253

GENERAL INFORMATION

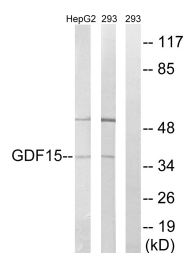
Product Type	Primary antibodies
Short Description	Rabbit polyclonal antibody anti-Growth/Differentiation Factor 15 (1-80 Internal) is suitable for use in Western Blot and ELISA research applications.
Applications	WB, ELISA
Host/Source	Rabbit
Reactivity	Human, Rat, Mouse

PRODUCT PROPERTIES

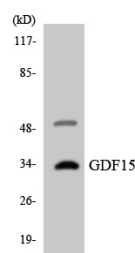
Clonality	Polyclonal
Clone ID	
Concentration	1 mg/mL
Conjugation	Unconjugated
Purification	The antibody was affinity-purified from rabbit anti-serum by affinity-chromatography.
Dilution Range	WB 1:500-1:2000 ELISA 1:40000
Formulation	PBS, 50% Glycerol, 0.5% BSA and 0.02% Sodium Azide.
Isotype	IgG
Storage	Store at -20°C for up to 1 year from the date of receipt, and avoid repeat freeze-thaw cycles.
Instruction	

TARGET INFORMATION

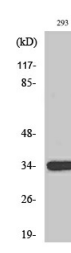
Gene ID	9518
Gene Symbol	GDF15
Uniprot ID	GDF15_HUMAN
Immunogen	The antiserum was produced against synthesized peptide derived from human GDF15 at amino acid range 31-80
Immunogen Region	1-80 Internal
Specificity	GDF15 polyclonal antibody (Growth/Differentiation Factor 15) binds to endogenous Growth/Differentiation Factor 15 at the amino acid region 1-80 Internal.
Immunogen Sequence	



Western blot analysis of lysates from 293 and HepG2 cells, using GDF15 Antibody. The lane on the right is blocked with the synthesized peptide.



Western blot analysis of the lysates from HT-29 cells using GDF15 antibody.



Western blot analysis of various cells using GDF-15 Polyclonal Antibody diluted at 1: 1000

This product is suitable for in-vitro studies under the RESEARCH USE ONLY [RUO] licence. This product must not be used as for diagnostic or other medical purposes.
St John's Laboratory Ltd, Knowledge Dock Business Centre, University Way, London, E16 2RD | Tel: 0208 223 3081