

Anti-GUCY1B2 antibody (N-Term) (STJ93252)

STJ93252

GENERAL INFORMATION

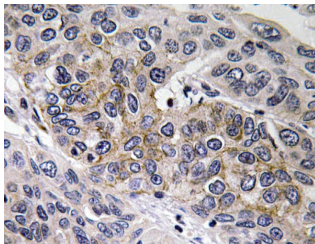
Product Type	Primary antibodies
Short Description	Rabbit polyclonal antibody anti-Guanylate Cyclase Soluble Subunit Beta-2 (N-Term) is suitable for use in Immunohistochemistry, Immunofluorescence and ELISA research applications.
Applications	IHC-P, IF-P, ELISA
Host/Source	Rabbit
Reactivity	Human, Mouse, Rat

PRODUCT PROPERTIES

Clonality	Polyclonal
Clone ID	
Concentration	1 mg/mL
Conjugation	Unconjugated
Purification	The antibody was affinity-purified from rabbit anti-serum by affinity-chromatography.
Dilution Range	IHC 1:100-1:300 ELISA 1:10000
Formulation	PBS, 50% Glycerol, 0.5% BSA and 0.02% Sodium Azide.
Isotype	IgG
Storage	Store at -20°C for up to 1 year from the date of receipt, and avoid repeat freeze-thaw cycles.
Instruction	

TARGET INFORMATION

Gene ID	NA
Gene Symbol	GUCY1B2
Uniprot ID	GUCYB2_HUMAN
Immunogen	The antiserum was produced against synthesized peptide derived from human GCS-beta-2 at amino acid range 53-102
Immunogen Region	N-Term
Specificity	GUCY1B2 polyclonal antibody (Guanylate Cyclase Soluble Subunit Beta-2) binds to endogenous Guanylate Cyclase Soluble Subunit Beta-2 at the amino acid region N-Term.
Immunogen Sequence	



Immunohistochemistry analysis of GCS-Beta-2 antibody in paraffin-embedded human lung carcinoma tissue.