

Anti-GUCY1B1 antibody (10-90 N-Term) (STJ93251)

STJ93251

GENERAL INFORMATION

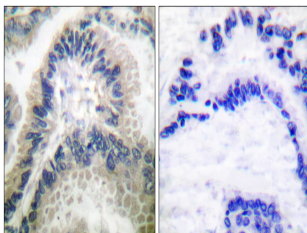
Product Type	Primary antibodies
Short Description	Rabbit polyclonal antibody anti-Guanylate Cyclase Soluble Subunit Beta-1 (10-90 N-Term) is suitable for use in Western Blot, Immunohistochemistry, Immunofluorescence and ELISA research applications.
Applications	WB, IHC-P, IF-P, ELISA
Host/Source	Rabbit
Reactivity	Human, Mouse, Rat

PRODUCT PROPERTIES

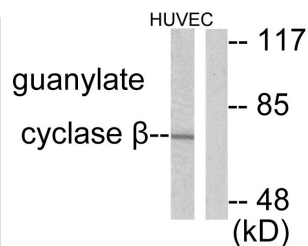
Clonality	Polyclonal
Clone ID	
Concentration	1 mg/mL
Conjugation	Unconjugated
Purification	The antibody was affinity-purified from rabbit anti-serum by affinity-chromatography.
Dilution Range	WB 1:500-1:2000 IHC 1:100-1:300 ELISA 1:5000
Formulation	PBS, 50% Glycerol, 0.5% BSA and 0.02% Sodium Azide.
Isotype	IgG
Storage Instruction	Store at -20°C for up to 1 year from the date of receipt, and avoid repeat freeze-thaw cycles.

TARGET INFORMATION

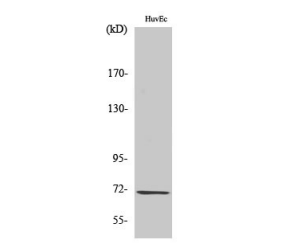
Gene ID	2983
Gene Symbol	GUCY1B1
Uniprot ID	GUCYB1_HUMAN
Immunogen	The antiserum was produced against synthesized peptide derived from human Guanylate Cyclase beta at amino acid range 10-59
Immunogen Region	10-90 N-Term
Specificity	GUCY1B1 polyclonal antibody (Guanylate Cyclase Soluble Subunit Beta-1) binds to endogenous Guanylate Cyclase Soluble Subunit Beta-1 at the amino acid region 10-90 N-Term.
Immunogen Sequence	



Immunohistochemistry analysis of paraffin-embedded human lung carcinoma tissue, using Guanylate Cyclase beta Antibody. The picture on the right is blocked with the synthesized peptide.



Western blot analysis of lysates from HUVEC cells, using Guanylate Cyclase beta Antibody. The lane on the right is blocked with the synthesized peptide.



Western blot analysis of various cells using GCS-Beta-1 Polyclonal Antibody