

Anti-TUBGCP5 antibody (710-790 Internal) (STJ93246)

STJ93246

GENERAL INFORMATION

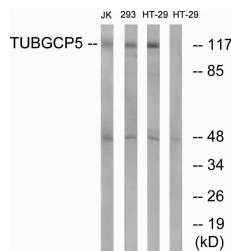
Product Type	Primary antibodies
Short Description	Rabbit polyclonal antibody anti-Gamma-Tubulin Complex Component 5 (710-790 Internal) is suitable for use in Western Blot, Immunohistochemistry, Immunofluorescence and ELISA research applications.
Applications	WB, IHC-P, IF-P, ELISA
Host/Source	Rabbit
Reactivity	Human, Mouse, Rat

PRODUCT PROPERTIES

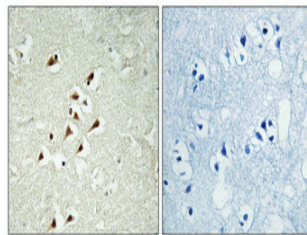
Clonality	Polyclonal
Clone ID	
Concentration	1 mg/mL
Conjugation	Unconjugated
Purification	The antibody was affinity-purified from rabbit anti-serum by affinity-chromatography.
Dilution Range	WB 1:500-1:2000 IHC 1:100-1:300 ELISA 1:20000
Formulation	PBS, 50% Glycerol, 0.5% BSA and 0.02% Sodium Azide.
Isotype	IgG
Storage Instruction	Store at -20°C for up to 1 year from the date of receipt, and avoid repeat freeze-thaw cycles.

TARGET INFORMATION

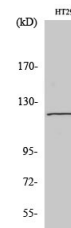
Gene ID	114791
Gene Symbol	TUBGCP5
Uniprot ID	GCP5_HUMAN
Immunogen	The antiserum was produced against synthesized peptide derived from human TUBGCP5 at amino acid range 741-790
Immunogen Region	710-790 Internal
Specificity	TUBGCP5 polyclonal antibody (Gamma-Tubulin Complex Component 5) binds to endogenous Gamma-Tubulin Complex Component 5 at the amino acid region 710-790 Internal.
Immunogen Sequence	



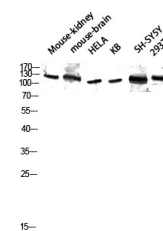
Western blot analysis of lysates from HT-29, Jurkat, and 293 cells, using TUBGCP5 Antibody. The lane on the right is blocked with the synthesized peptide.



Immunohistochemical analysis of paraffin-embedded Human brain. Antibody was diluted at 1:100 (4°C overnight). High-pressure and temperature Tris-EDTA, pH8.0 was used for antigen retrieval. Negative control (right) obtained from antibody was pre-absorbed by immunogen peptide.



Western blot analysis of 293 cells using GCP5 Polyclonal Antibody diluted at 1: 2000



Western blot analysis of Mouse-kidney mouse-brain HELA KB SH-SY5Y 293T lysis using GCP5 antibody. Antibody was diluted at 1:2000

This product is suitable for in-vitro studies under the RESEARCH USE ONLY [RUO] licence. This product must not be used as for diagnostic or other medical purposes.
St John's Laboratory Ltd, Knowledge Dock Business Centre, University Way, London, E16 2RD | Tel: 0208 223 3081