

Anti-TUBGCP3 antibody (180-260 Internal) (STJ93244)

STJ93244

GENERAL INFORMATION

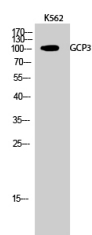
Product Type	Primary antibodies
Short Description	Rabbit polyclonal antibody anti-Gamma-Tubulin Complex Component 3 (180-260 Internal) is suitable for use in Western Blot, Immunohistochemistry, Immunofluorescence and ELISA research applications.
Applications	WB, IHC-P, IF-P, ELISA
Host/Source	Rabbit
Reactivity	Human, Mouse

PRODUCT PROPERTIES

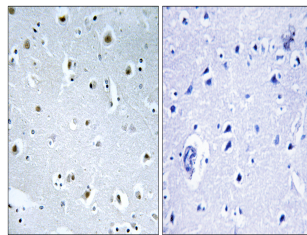
Clonality	Polyclonal
Clone ID	
Concentration	1 mg/mL
Conjugation	Unconjugated
Purification	The antibody was affinity-purified from rabbit anti-serum by affinity-chromatography.
Dilution Range	WB 1:500-1:2000 IHC 1:100-1:300 ELISA 1:20000
Formulation	PBS, 50% Glycerol, 0.5% BSA and 0.02% Sodium Azide.
Isotype	IgG
Storage Instruction	Store at -20°C for up to 1 year from the date of receipt, and avoid repeat freeze-thaw cycles.

TARGET INFORMATION

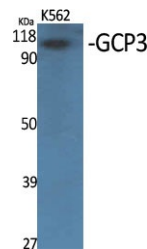
Gene ID	10426
Gene Symbol	TUBGCP3
Uniprot ID	GCP3_HUMAN
Immunogen	The antiserum was produced against synthesized peptide derived from human TUBGCP3 at amino acid range 201-250
Immunogen Region	180-260 Internal
Specificity	TUBGCP3 polyclonal antibody (Gamma-Tubulin Complex Component 3) binds to endogenous Gamma-Tubulin Complex Component 3 at the amino acid region 180-260 Internal.
Immunogen Sequence	



Western blot analysis of K562 cells using GCP3 Polyclonal Antibody



Immunohistochemistry analysis of paraffin-embedded human brain tissue, using TUBGCP3 Antibody. The picture on the right is blocked with the synthesized peptide.



Western blot analysis of various cells using GCP3 Polyclonal Antibody

This product is suitable for in-vitro studies under the RESEARCH USE ONLY [RUO] licence. This product must not be used as for diagnostic or other medical purposes.
St John's Laboratory Ltd, Knowledge Dock Business Centre, University Way, London, E16 2RD | Tel: 0208 223 3081