

Anti-GCNT7 antibody (280-360 C-Term) (STJ93243)

STJ93243

GENERAL INFORMATION

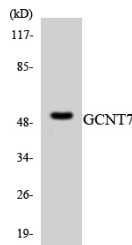
| | |
|--------------------------|--|
| Product Type | Primary antibodies |
| Short Description | Rabbit polyclonal antibody anti-Beta-1-3-Galactosyl-O-Glycosyl-Glycoprotein Beta-1-6-N-Acetylglucosaminyltransferase 7 (280-360 C-Term) is suitable for use in Western Blot, Immunohistochemistry, Immunofluorescence, Immunocytochemistry and ELISA resea |
| Applications | WB, IHC-P, IF, ICC, ELISA |
| Host/Source | Rabbit |
| Reactivity | Human, Rat, Mouse |

PRODUCT PROPERTIES

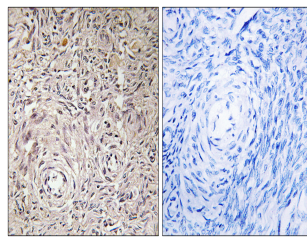
| | |
|----------------------------|--|
| Clonality | Polyclonal |
| Clone ID | |
| Concentration | 1 mg/mL |
| Conjugation | Unconjugated |
| Purification | The antibody was affinity-purified from rabbit anti-serum by affinity-chromatography. |
| Dilution Range | WB 1:500-1:2000 IHC 1:100-1:300 IF 1:200-1:1000 ELISA 1:40000 |
| Formulation | PBS, 50% Glycerol, 0.5% BSA and 0.02% Sodium Azide. |
| Isotype | IgG |
| Storage Instruction | Store at -20°C for up to 1 year from the date of receipt, and avoid repeat freeze-thaw cycles. |

TARGET INFORMATION

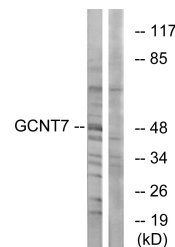
| | |
|---------------------------|--|
| Gene ID | 140687 |
| Gene Symbol | GCNT7 |
| Uniprot ID | GCNT7_HUMAN |
| Immunogen | The antiserum was produced against synthesized peptide derived from human GCNT7 at amino acid range 311-360 |
| Immunogen Region | 280-360 C-Term |
| Specificity | GCNT7 polyclonal antibody (Beta-1-3-Galactosyl-O-Glycosyl-Glycoprotein Beta-1-6-N-Acetylglucosaminyltransferase 7) binds to endogenous Beta-1-3-Galactosyl-O-Glycosyl-Glycoprotein Beta-1-6-N-Acetylglucosaminyltransferase 7 at the amino acid region 280 |
| Immunogen Sequence | |



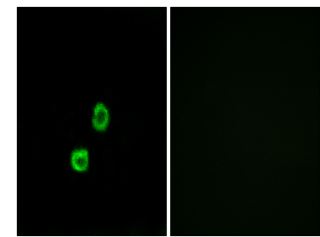
Western blot analysis of the lysates from HT-29 cells using GCNT7 antibody.



Immunohistochemistry analysis of paraffin-embedded human ovary tissue, using GCNT7 Antibody. The picture on the right is blocked with the synthesized peptide.



Western blot analysis of lysates from K562 cells, using GCNT7 Antibody. The lane on the right is blocked with the synthesized peptide.



Immunofluorescence analysis of MCF7 cells, using GCNT7 Antibody. The picture on the right is blocked with the synthesized peptide.

This product is suitable for in-vitro studies under the RESEARCH USE ONLY [RUO] licence. This product must not be used as for diagnostic or other medical purposes.
St John's Laboratory Ltd, Knowledge Dock Business Centre, University Way, London, E16 2RD | Tel: 0208 223 3081