

## Anti-GCNT3 antibody (200-280 Internal) (STJ93241)

STJ93241

### GENERAL INFORMATION

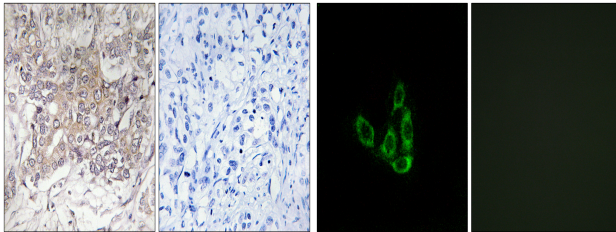
<b>Product Type</b>	Primary antibodies
<b>Short Description</b>	Rabbit polyclonal antibody anti-Beta-1-3-Galactosyl-O-Glycosyl-Glycoprotein Beta-1-6-N-Acetylglucosaminyltransferase 3 (200-280 Internal) is suitable for use in Immunohistochemistry, Immunofluorescence, Immunocytochemistry and ELISA research applicat
<b>Applications</b>	IHC-P, IF, ICC, ELISA
<b>Host/Source</b>	Rabbit
<b>Reactivity</b>	Human, Rat, Mouse

### PRODUCT PROPERTIES

<b>Clonality</b>	Polyclonal
<b>Clone ID</b>	
<b>Concentration</b>	1 mg/mL
<b>Conjugation</b>	Unconjugated
<b>Purification</b>	The antibody was affinity-purified from rabbit anti-serum by affinity-chromatography.
<b>Dilution Range</b>	IHC 1:100-1:300 IF 1:200-1:1000 ELISA 1:20000
<b>Formulation</b>	PBS, 50% Glycerol, 0.5% BSA and 0.02% Sodium Azide.
<b>Isotype</b>	IgG
<b>Storage Instruction</b>	Store at -20°C for up to 1 year from the date of receipt, and avoid repeat freeze-thaw cycles.

### TARGET INFORMATION

<b>Gene ID</b>	9245
<b>Gene Symbol</b>	GCNT3
<b>Uniprot ID</b>	GCNT3_HUMAN
<b>Immunogen</b>	The antiserum was produced against synthesized peptide derived from human GCNT3 at amino acid range 226-275
<b>Immunogen Region</b>	200-280 Internal
<b>Specificity</b>	GCNT3 polyclonal antibody (Beta-1-3-Galactosyl-O-Glycosyl-Glycoprotein Beta-1-6-N-Acetylglucosaminyltransferase 3) binds to endogenous Beta-1-3-Galactosyl-O-Glycosyl-Glycoprotein Beta-1-6-N-Acetylglucosaminyltransferase 3 at the amino acid region 200
<b>Immunogen Sequence</b>	



Immunohistochemistry analysis of paraffin-embedded human liver carcinoma tissue, using GCNT3 Antibody. The picture on the right is blocked with the synthesized peptide.

Immunofluorescence analysis of A549 cells, using GCNT3 Antibody. The picture on the right is blocked with the synthesized peptide.

This product is suitable for in-vitro studies under the RESEARCH USE ONLY [RUO] licence. This product must not be used as for diagnostic or other medical purposes.  
St John's Laboratory Ltd, Knowledge Dock Business Centre, University Way, London, E16 2RD | Tel: 0208 223 3081