

## Anti-KAT2A antibody (660-740 C-Term) (STJ93240)

STJ93240

### GENERAL INFORMATION

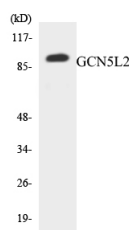
<b>Product Type</b>	Primary antibodies
<b>Short Description</b>	Rabbit polyclonal antibody anti-Histone Acetyltransferase Kat2a (660-740 C-Term) is suitable for use in Western Blot, Immunohistochemistry, Immunofluorescence and ELISA research applications.
<b>Applications</b>	WB, IHC-P, IF-P, ELISA
<b>Host/Source</b>	Rabbit
<b>Reactivity</b>	Human, Mouse

### PRODUCT PROPERTIES

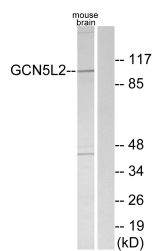
<b>Clonality</b>	Polyclonal
<b>Clone ID</b>	
<b>Concentration</b>	1 mg/mL
<b>Conjugation</b>	Unconjugated
<b>Purification</b>	The antibody was affinity-purified from rabbit anti-serum by affinity-chromatography.
<b>Dilution Range</b>	WB 1:500-1:2000 IHC 1:100-1:300 ELISA 1:20000
<b>Formulation</b>	PBS, 50% Glycerol, 0.5% BSA and 0.02% Sodium Azide.
<b>Isotype</b>	IgG
<b>Storage Instruction</b>	Store at -20°C for up to 1 year from the date of receipt, and avoid repeat freeze-thaw cycles.

### TARGET INFORMATION

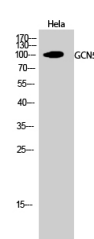
<b>Gene ID</b>	2648
<b>Gene Symbol</b>	KAT2A
<b>Uniprot ID</b>	KAT2A_HUMAN
<b>Immunogen</b>	The antiserum was produced against synthesized peptide derived from human GCN5L2 at amino acid range 691-740
<b>Immunogen Region</b>	660-740 C-Term
<b>Specificity</b>	KAT2A polyclonal antibody (Histone Acetyltransferase Kat2a) binds to endogenous Histone Acetyltransferase Kat2a at the amino acid region 660-740 C-Term.
<b>Immunogen Sequence</b>	



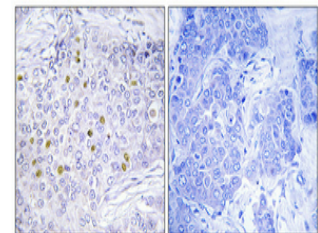
Western blot analysis of the lysates from RAW264.7 cells using GCN5L2 antibody.



Western blot analysis of lysates from mouse brain, using GCN5L2 Antibody. The lane on the right is blocked with the synthesized peptide.



Western blot analysis of HeLa cells using GCN5 Polyclonal Antibody diluted at 1:1000 cells nucleus extracted by Minute TM Cytoplasmic and Nuclear Fractionation kit (SC-003, Inventiotech, MN, USA).



Immunohistochemical analysis of paraffin-embedded Human breast cancer. Antibody was diluted at 1:100 (4°C overnight). High-pressure and temperature Tris-EDTA, pH8.0 was used for antigen retrieval. Negative control (right) obtained from antibody was pre-absorbed by immunogen peptide.

This product is suitable for in-vitro studies under the RESEARCH USE ONLY [RUO] licence. This product must not be used as for diagnostic or other medical purposes.  
St John's Laboratory Ltd, Knowledge Dock Business Centre, University Way, London, E16 2RD | Tel: 0208 223 3081