

Anti-GCG antibody (30-110 Internal) (STJ93236)

STJ93236

GENERAL INFORMATION

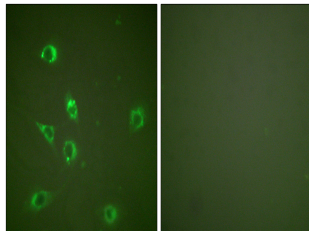
Product Type	Primary antibodies
Short Description	Rabbit polyclonal antibody anti-Pro-Glucagon Cleaved Into-Glicentin-Glicentin-Related Polypeptide (30-110 Internal) is suitable for use in Western Blot, Immunohistochemistry, Immunofluorescence, Immunocytochemistry and ELISA research applications.
Applications	WB, IHC-P, IF, ICC, ELISA
Host/Source	Rabbit
Reactivity	Human, Mouse, Rat, Monkey

PRODUCT PROPERTIES

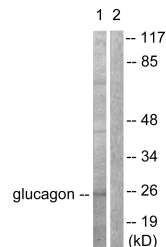
Clonality	Polyclonal
Clone ID	
Concentration	1 mg/mL
Conjugation	Unconjugated
Purification	The antibody was affinity-purified from rabbit anti-serum by affinity-chromatography.
Dilution Range	WB 1:500-1:2000 IHC 1:100-1:300 IF 1:200-1:1000 ELISA 1:40000
Formulation	PBS, 50% Glycerol, 0.5% BSA and 0.02% Sodium Azide.
Isotype	IgG
Storage Instruction	Store at -20°C for up to 1 year from the date of receipt, and avoid repeat freeze-thaw cycles.

TARGET INFORMATION

Gene ID	2641
Gene Symbol	GCG
Uniprot ID	GLUC_HUMAN
Immunogen	The antiserum was produced against synthesized peptide derived from human Glucagon at amino acid range 61-110
Immunogen Region	30-110 Internal
Specificity	GCG polyclonal antibody (Pro-Glucagon Cleaved Into-Glicentin-Glicentin-Related Polypeptide) binds to endogenous Pro-Glucagon Cleaved Into-Glicentin-Glicentin-Related Polypeptide at the amino acid region 30-110 Internal.
Immunogen Sequence	



Immunofluorescence analysis of NIH/3T3 cells, using Glucagon Antibody. The picture on the right is blocked with the synthesized peptide.



Western blot analysis of lysates from COS7 cells, using Glucagon Antibody. The lane on the right is blocked with the synthesized peptide.



Western blot analysis of various cells using GCG Polyclonal Antibody

This product is suitable for in-vitro studies under the RESEARCH USE ONLY [RUO] licence. This product must not be used as for diagnostic or other medical purposes.
St John's Laboratory Ltd, Knowledge Dock Business Centre, University Way, London, E16 2RD | Tel: 0208 223 3081