

Anti-GBP1 antibody (40-120 Internal) (STJ93232)

STJ93232

GENERAL INFORMATION

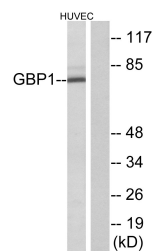
Product Type	Primary antibodies
Short Description	Rabbit polyclonal antibody anti-Guanylate-Binding Protein 1 (40-120 Internal) is suitable for use in Western Blot, Immunofluorescence, Immunocytochemistry and ELISA research applications.
Applications	WB, IF, ICC, ELISA
Host/Source	Rabbit
Reactivity	Human, Rat, Mouse

PRODUCT PROPERTIES

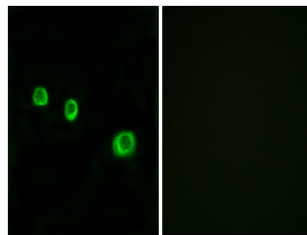
Clonality	Polyclonal
Clone ID	
Concentration	1 mg/mL
Conjugation	Unconjugated
Purification	The antibody was affinity-purified from rabbit anti-serum by affinity-chromatography.
Dilution Range	WB 1:500-1:2000 IF 1:200-1:1000 ELISA 1:40000
Formulation	PBS, 50% Glycerol, 0.5% BSA and 0.02% Sodium Azide.
Isotype	IgG
Storage Instruction	Store at -20°C for up to 1 year from the date of receipt, and avoid repeat freeze-thaw cycles.

TARGET INFORMATION

Gene ID	2633
Gene Symbol	GBP1
Uniprot ID	GBP1_HUMAN
Immunogen	The antiserum was produced against synthesized peptide derived from human GBP1 at amino acid range 71-120
Immunogen Region	40-120 Internal
Specificity	GBP1 polyclonal antibody (Guanylate-Binding Protein 1) binds to endogenous Guanylate-Binding Protein 1 at the amino acid region 40-120 Internal.
Immunogen Sequence	



Western blot analysis of lysates from HUVEC cells, using GBP1 Antibody. The lane on the right is blocked with the synthesized peptide.



Immunofluorescence analysis of MCF7 cells, using GBP1 Antibody. The picture on the right is blocked with the synthesized peptide.