

## Anti-GATA6 antibody (430-510 C-Term) (STJ93230)

STJ93230

### GENERAL INFORMATION

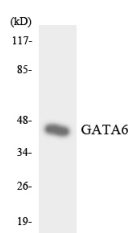
<b>Product Type</b>	Primary antibodies
<b>Short Description</b>	Rabbit polyclonal antibody anti-Transcription Factor Gata-6 (430-510 C-Term) is suitable for use in Western Blot and ELISA research applications.
<b>Applications</b>	WB, ELISA
<b>Host/Source</b>	Rabbit
<b>Reactivity</b>	Human, Mouse, Rat

### PRODUCT PROPERTIES

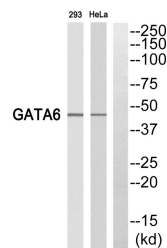
<b>Clonality</b>	Polyclonal
<b>Clone ID</b>	
<b>Concentration</b>	1 mg/mL
<b>Conjugation</b>	Unconjugated
<b>Purification</b>	The antibody was affinity-purified from rabbit anti-serum by affinity-chromatography.
<b>Dilution Range</b>	WB 1:500-1:2000 ELISA 1:10000
<b>Formulation</b>	PBS, 50% Glycerol, 0.5% BSA and 0.02% Sodium Azide.
<b>Isotype</b>	IgG
<b>Storage</b>	Store at -20°C for up to 1 year from the date of receipt, and avoid repeat freeze-thaw cycles.
<b>Instruction</b>	

### TARGET INFORMATION

<b>Gene ID</b>	2627
<b>Gene Symbol</b>	GATA6
<b>Uniprot ID</b>	GATA6_HUMAN
<b>Immunogen</b>	The antiserum was produced against synthesized peptide derived from human GATA6 at amino acid range 461-510
<b>Immunogen Region</b>	430-510 C-Term
<b>Specificity</b>	GATA6 polyclonal antibody (Transcription Factor Gata-6) binds to endogenous Transcription Factor Gata-6 at the amino acid region 430-510 C-Term.
<b>Immunogen Sequence</b>	



Western blot analysis of the lysates from HepG2 cells using GATA6 antibody.



Western blot analysis of GATA6 Antibody. The lane on the right is blocked with the GATA6 peptide.

This product is suitable for in-vitro studies under the RESEARCH USE ONLY [RUO] licence. This product must not be used as for diagnostic or other medical purposes.  
St John's Laboratory Ltd, Knowledge Dock Business Centre, University Way, London, E16 2RD | Tel: 0208 223 3081