

Anti-GSDMC antibody (80-160 Internal) (STJ93220)

STJ93220

GENERAL INFORMATION

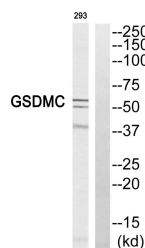
Product Type	Primary antibodies
Short Description	Rabbit polyclonal antibody anti-Gasdermin-C (80-160 Internal) is suitable for use in Western Blot and ELISA research applications.
Applications	WB, ELISA
Host/Source	Rabbit
Reactivity	Human, Rat, Mouse

PRODUCT PROPERTIES

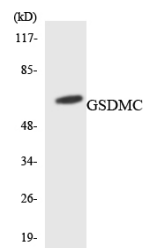
Clonality	Polyclonal
Clone ID	
Concentration	1 mg/mL
Conjugation	Unconjugated
Purification	The antibody was affinity-purified from rabbit anti-serum by affinity-chromatography.
Dilution Range	WB 1:500-1:2000 ELISA 1:10000
Formulation	PBS, 50% Glycerol, 0.5% BSA and 0.02% Sodium Azide.
Isotype	IgG
Storage Instruction	Store at -20°C for up to 1 year from the date of receipt, and avoid repeat freeze-thaw cycles.

TARGET INFORMATION

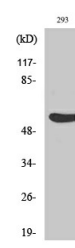
Gene ID	56169
Gene Symbol	GSDMC
Uniprot ID	GSDMC_HUMAN
Immunogen	The antiserum was produced against synthesized peptide derived from human GSDMC at amino acid range 109-158
Immunogen Region	80-160 Internal
Specificity	GSDMC polyclonal antibody (Gasdermin-C) binds to endogenous Gasdermin-C at the amino acid region 80-160 Internal.
Immunogen Sequence	



Western blot analysis of GSDMC Antibody. The lane on the right is blocked with the GSDMC peptide.



Western blot analysis of the lysates from HepG2 cells using GSDMC antibody.



Western blot analysis of various cells using Gasdermin C Polyclonal Antibody diluted at 1: 500.

This product is suitable for in-vitro studies under the RESEARCH USE ONLY [RUO] licence. This product must not be used as for diagnostic or other medical purposes.
St John's Laboratory Ltd, Knowledge Dock Business Centre, University Way, London, E16 2RD | Tel: 0208 223 3081