

## Anti-GAS1 antibody (210-290 C-Term) (STJ93215)

STJ93215

### GENERAL INFORMATION

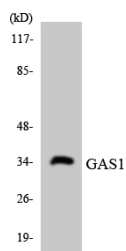
<b>Product Type</b>	Primary antibodies
<b>Short Description</b>	Rabbit polyclonal antibody anti-Growth Arrest-Specific Protein 1 (210-290 C-Term) is suitable for use in Western Blot and ELISA research applications.
<b>Applications</b>	WB, ELISA
<b>Host/Source</b>	Rabbit
<b>Reactivity</b>	Human, Mouse

### PRODUCT PROPERTIES

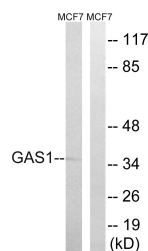
<b>Clonality</b>	Polyclonal
<b>Clone ID</b>	
<b>Concentration</b>	1 mg/mL
<b>Conjugation</b>	Unconjugated
<b>Purification</b>	The antibody was affinity-purified from rabbit anti-serum by affinity-chromatography.
<b>Dilution Range</b>	WB 1:500-1:2000 ELISA 1:40000
<b>Formulation</b>	PBS, 50% Glycerol, 0.5% BSA and 0.02% Sodium Azide.
<b>Isotype</b>	IgG
<b>Storage Instruction</b>	Store at -20°C for up to 1 year from the date of receipt, and avoid repeat freeze-thaw cycles.

### TARGET INFORMATION

<b>Gene ID</b>	2619
<b>Gene Symbol</b>	GAS1
<b>Uniprot ID</b>	GAS1_HUMAN
<b>Immunogen</b>	The antiserum was produced against synthesized peptide derived from human GAS1 at amino acid range 241-290
<b>Immunogen Region</b>	210-290 C-Term
<b>Specificity</b>	GAS1 polyclonal antibody (Growth Arrest-Specific Protein 1) binds to endogenous Growth Arrest-Specific Protein 1 at the amino acid region 210-290 C-Term.
<b>Immunogen Sequence</b>	



Western blot analysis of the lysates from HeLa cells using GAS1 antibody.



Western blot analysis of lysates from MCF-7 cells, using GAS1 Antibody. The lane on the right is blocked with the synthesized peptide.