

Anti-RASA3 antibody (220-300 Internal) (STJ93213)

STJ93213

GENERAL INFORMATION

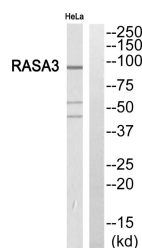
Product Type	Primary antibodies
Short Description	Rabbit polyclonal antibody anti-Ras Gtpase-Activating Protein 3 (220-300 Internal) is suitable for use in Western Blot and ELISA research applications.
Applications	WB, ELISA
Host/Source	Rabbit
Reactivity	Human, Mouse, Rat

PRODUCT PROPERTIES

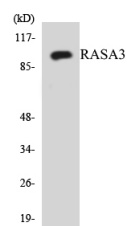
Clonality	Polyclonal
Clone ID	
Concentration	1 mg/mL
Conjugation	Unconjugated
Purification	The antibody was affinity-purified from rabbit anti-serum by affinity-chromatography.
Dilution Range	WB 1:500-1:2000 ELISA 1:40000
Formulation	PBS, 50% Glycerol, 0.5% BSA and 0.02% Sodium Azide.
Isotype	IgG
Storage	Store at -20°C for up to 1 year from the date of receipt, and avoid repeat freeze-thaw cycles.
Instruction	

TARGET INFORMATION

Gene ID	22821
Gene Symbol	RASA3
Uniprot ID	RASA3_HUMAN
Immunogen	The antiserum was produced against synthesized peptide derived from human RASA3 at amino acid range 247-296
Immunogen Region	220-300 Internal
Specificity	RASA3 polyclonal antibody (Ras Gtpase-Activating Protein 3) binds to endogenous Ras Gtpase-Activating Protein 3 at the amino acid region 220-300 Internal.
Immunogen Sequence	



Western blot analysis of RASA3 Antibody. The lane on the right is blocked with the RASA3 peptide.



Western blot analysis of the lysates from HUVEC cells using RASA3 antibody.



Western blot analysis of various cells using GAP1-InsP4 BP Polyclonal Antibody.