

Anti-MCM3AP antibody (1810-1890 C-Term) (STJ93212)

STJ93212

GENERAL INFORMATION

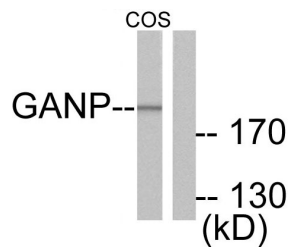
Product Type	Primary antibodies
Short Description	Rabbit polyclonal antibody anti-Germinal-Center Associated Nuclear Protein (1810-1890 C-Term) is suitable for use in Western Blot, Immunohistochemistry, Immunofluorescence and ELISA research applications.
Applications	WB, IHC-P, IF-P, ELISA
Host/Source	Rabbit
Reactivity	Human, Mouse

PRODUCT PROPERTIES

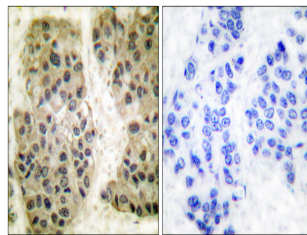
Clonality	Polyclonal
Clone ID	
Concentration	1 mg/mL
Conjugation	Unconjugated
Purification	The antibody was affinity-purified from rabbit anti-serum by affinity-chromatography.
Dilution Range	WB 1:500-1:2000 IHC 1:100-1:300 ELISA 1:40000
Formulation	PBS, 50% Glycerol, 0.5% BSA and 0.02% Sodium Azide.
Isotype	IgG
Storage Instruction	Store at -20°C for up to 1 year from the date of receipt, and avoid repeat freeze-thaw cycles.

TARGET INFORMATION

Gene ID	8888
Gene Symbol	MCM3AP
Uniprot ID	GANP_HUMAN
Immunogen	The antiserum was produced against synthesized peptide derived from human GANP at amino acid range 1841-1890
Immunogen Region	1810-1890 C-Term
Specificity	MCM3AP polyclonal antibody (Germinal-Center Associated Nuclear Protein) binds to endogenous Germinal-Center Associated Nuclear Protein at the amino acid region 1810-1890 C-Term.
Immunogen Sequence	



Western blot analysis of lysates from COS7 cells, using GANP Antibody. The lane on the right is blocked with the synthesized peptide.



Immunohistochemistry analysis of paraffin-embedded human breast carcinoma tissue, using GANP Antibody. The picture on the right is blocked with the synthesized peptide.

This product is suitable for in-vitro studies under the RESEARCH USE ONLY [RUO] licence. This product must not be used as for diagnostic or other medical purposes.
St John's Laboratory Ltd, Knowledge Dock Business Centre, University Way, London, E16 2RD | Tel: 0208 223 3081