

Anti-GALR2 antibody (180-260 Internal) (STJ93210)

STJ93210

GENERAL INFORMATION

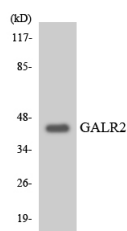
Product Type	Primary antibodies
Short Description	Rabbit polyclonal antibody anti-Galanin Receptor Type 2 (180-260 Internal) is suitable for use in Western Blot and ELISA research applications.
Applications	WB, ELISA
Host/Source	Rabbit
Reactivity	Human, Mouse, Rat

PRODUCT PROPERTIES

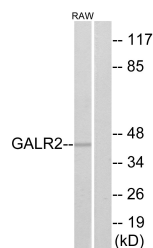
Clonality	Polyclonal
Clone ID	
Concentration	1 mg/mL
Conjugation	Unconjugated
Purification	The antibody was affinity-purified from rabbit anti-serum by affinity-chromatography.
Dilution Range	WB 1:500-1:2000 ELISA 1:40000
Formulation	PBS, 50% Glycerol, 0.5% BSA and 0.02% Sodium Azide.
Isotype	IgG
Storage Instruction	Store at -20°C for up to 1 year from the date of receipt, and avoid repeat freeze-thaw cycles.

TARGET INFORMATION

Gene ID	8811
Gene Symbol	GALR2
Uniprot ID	GALR2_HUMAN
Immunogen	The antiserum was produced against synthesized peptide derived from human GALR2 at amino acid range 201-250
Immunogen Region	180-260 Internal
Specificity	GALR2 polyclonal antibody (Galanin Receptor Type 2) binds to endogenous Galanin Receptor Type 2 at the amino acid region 180-260 Internal.
Immunogen Sequence	



Western blot analysis of the lysates from HepG2 cells using GALR2 antibody.



Western blot analysis of lysates from RAW264.7 cells, using GALR2 Antibody. The lane on the right is blocked with the synthesized peptide.

This product is suitable for in-vitro studies under the RESEARCH USE ONLY [RUO] licence. This product must not be used as for diagnostic or other medical purposes.
St John's Laboratory Ltd, Knowledge Dock Business Centre, University Way, London, E16 2RD | Tel: 0208 223 3081