

Anti-GALR1 antibody (140-220 Internal) (STJ93209)

STJ93209

GENERAL INFORMATION

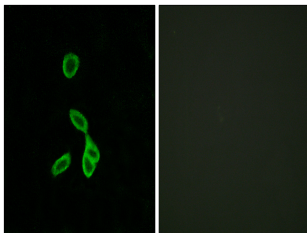
Product Type	Primary antibodies
Short Description	Rabbit polyclonal antibody anti-Galanin Receptor Type 1 (140-220 Internal) is suitable for use in Immunofluorescence, Immunocytochemistry and ELISA research applications.
Applications	IF, ICC, ELISA
Host/Source	Rabbit
Reactivity	Human, Mouse

PRODUCT PROPERTIES

Clonality	Polyclonal
Clone ID	
Concentration	1 mg/mL
Conjugation	Unconjugated
Purification	The antibody was affinity-purified from rabbit anti-serum by affinity-chromatography.
Dilution Range	IF 1:200-1:1000 ELISA 1:5000
Formulation	PBS, 50% Glycerol, 0.5% BSA and 0.02% Sodium Azide.
Isotype	IgG
Storage	Store at -20°C for up to 1 year from the date of receipt, and avoid repeat freeze-thaw cycles.
Instruction	

TARGET INFORMATION

Gene ID	2587
Gene Symbol	GALR1
Uniprot ID	GALR1_HUMAN
Immunogen	The antiserum was produced against synthesized peptide derived from human GALR1 at amino acid range 161-210
Immunogen Region	140-220 Internal
Specificity	GALR1 polyclonal antibody (Galanin Receptor Type 1) binds to endogenous Galanin Receptor Type 1 at the amino acid region 140-220 Internal.
Immunogen Sequence	



Immunofluorescence analysis of LOVO cells, using GALR1 Antibody. The picture on the right is blocked with the synthesized peptide.