

Anti-GLB1L3 antibody (260-340 Internal) (STJ93200)

STJ93200

GENERAL INFORMATION

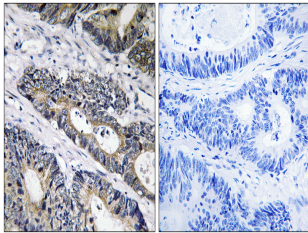
Product Type	Primary antibodies
Short Description	Rabbit polyclonal antibody anti-Beta-Galactosidase-1-Like Protein 3 (260-340 Internal) is suitable for use in Immunohistochemistry, Immunofluorescence and ELISA research applications.
Applications	IHC-P, IF-P, ELISA
Host/Source	Rabbit
Reactivity	Human, Rat, Mouse

PRODUCT PROPERTIES

Clonality	Polyclonal
Clone ID	
Concentration	1 mg/mL
Conjugation	Unconjugated
Purification	The antibody was affinity-purified from rabbit anti-serum by affinity-chromatography.
Dilution Range	IHC 1:100-1:300 ELISA 1:40000
Formulation	PBS, 50% Glycerol, 0.5% BSA and 0.02% Sodium Azide.
Isotype	IgG
Storage	Store at -20°C for up to 1 year from the date of receipt, and avoid repeat freeze-thaw cycles.
Instruction	

TARGET INFORMATION

Gene ID	112937
Gene Symbol	GLB1L3
Uniprot ID	GLBL3_HUMAN
Immunogen	The antiserum was produced against synthesized peptide derived from human BGLL3 at amino acid range 291-340
Immunogen Region	260-340 Internal
Specificity	GLB1L3 polyclonal antibody (Beta-Galactosidase-1-Like Protein 3) binds to endogenous Beta-Galactosidase-1-Like Protein 3 at the amino acid region 260-340 Internal.
Immunogen Sequence	



Immunohistochemistry analysis of paraffin-embedded human colon carcinoma, using GLB1L3 Antibody. The picture on the right is blocked with the synthesized peptide.