

Anti-GRAP2 antibody (90-170 Internal) (STJ93198)

STJ93198

GENERAL INFORMATION

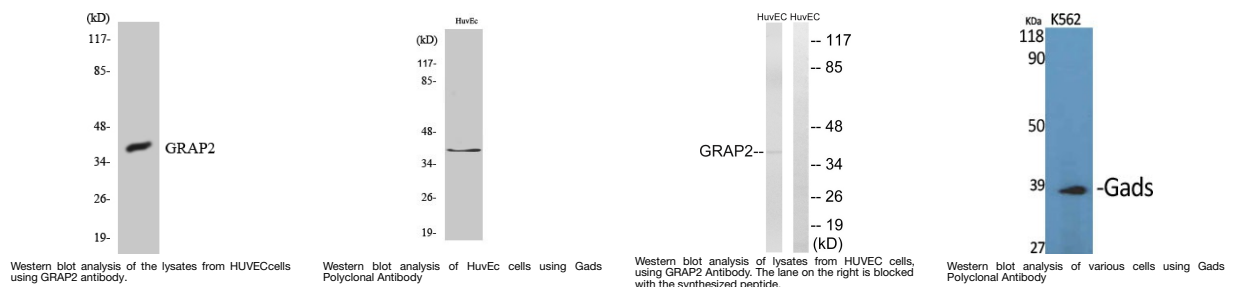
Product Type	Primary antibodies
Short Description	Rabbit polyclonal antibody anti-Grb2-Related Adapter Protein 2 (90-170 Internal) is suitable for use in Western Blot and ELISA research applications.
Applications	WB, ELISA
Host/Source	Rabbit
Reactivity	Human, Rat, Mouse

PRODUCT PROPERTIES

Clonality	Polyclonal
Clone ID	
Concentration	1 mg/mL
Conjugation	Unconjugated
Purification	The antibody was affinity-purified from rabbit anti-serum by affinity-chromatography.
Dilution Range	WB 1:500-1:2000 ELISA 1:40000
Formulation	PBS, 50% Glycerol, 0.5% BSA and 0.02% Sodium Azide.
Isotype	IgG
Storage	Store at -20°C for up to 1 year from the date of receipt, and avoid repeat freeze-thaw cycles.
Instruction	

TARGET INFORMATION

Gene ID	9402
Gene Symbol	GRAP2
Uniprot ID	GRAP2_HUMAN
Immunogen	The antiserum was produced against synthesized peptide derived from human GRAP2 at amino acid range 121-170
Immunogen Region	90-170 Internal
Specificity	GRAP2 polyclonal antibody (Grb2-Related Adapter Protein 2) binds to endogenous Grb2-Related Adapter Protein 2 at the amino acid region 90-170 Internal.
Immunogen Sequence	



This product is suitable for in-vitro studies under the RESEARCH USE ONLY [RUO] licence. This product must not be used as for diagnostic or other medical purposes.
 St John's Laboratory Ltd, Knowledge Dock Business Centre, University Way, London, E16 2RD | Tel: 0208 223 3081