

## Anti-GAD-65/67 antibody (520-600 C-Term) (STJ93195)

STJ93195

### GENERAL INFORMATION

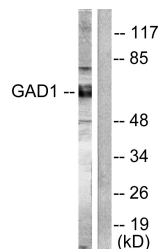
<b>Product Type</b>	Primary antibodies
<b>Short Description</b>	Rabbit polyclonal antibody anti-Glutamate decarboxylase 1 and Glutamate decarboxylase 2 (520-600 C-Term) is suitable for use in Western Blot, Immunohistochemistry, Immunofluorescence, Immunocytochemistry and ELISA research applications.
<b>Applications</b>	WB, IHC-P, IF, ICC, ELISA
<b>Host/Source</b>	Rabbit
<b>Reactivity</b>	Human, Mouse

### PRODUCT PROPERTIES

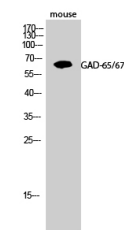
<b>Clonality</b>	Polyclonal
<b>Clone ID</b>	
<b>Concentration</b>	1 mg/mL
<b>Conjugation</b>	Unconjugated
<b>Purification</b>	The antibody was affinity-purified from rabbit anti-serum by affinity-chromatography.
<b>Dilution</b>	WB 1:500-1:2000
<b>Range</b>	IHC 1:100-1:300 IF 1:200-1:1000 ELISA 1:5000
<b>Formulation</b>	PBS, 50% Glycerol, 0.5% BSA and 0.02% Sodium Azide.
<b>Isotype</b>	IgG
<b>Storage Instruction</b>	Store at -20°C for up to 1 year from the date of receipt, and avoid repeat freeze-thaw cycles.

### TARGET INFORMATION

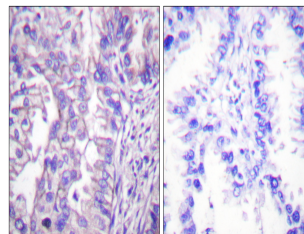
<b>Gene ID</b>	<a href="#">2571</a> <a href="#">2572</a>
<b>Gene Symbol</b>	<a href="#">GAD1</a> <a href="#">GAD2</a>
<b>Uniprot ID</b>	<a href="#">DCE1_HUMAN</a> <a href="#">DCE2_HUMAN</a>
<b>Immunogen</b>	The antiserum was produced against synthesized peptide derived from human GAD1/2 at amino acid range 545-594
<b>Immunogen Region</b>	520-600 C-Term
<b>Specificity</b>	GAD-65/67 polyclonal antibody (Glutamate decarboxylase 1 and Glutamate decarboxylase 2) binds to endogenous Glutamate decarboxylase 1 and Glutamate decarboxylase 2 at the amino acid region 520-600 C-Term.
<b>Immunogen Sequence</b>	



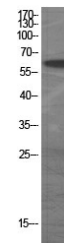
Western blot analysis of lysates from mouse brain, using GAD1/2 Antibody. The lane on the right is blocked with the synthesized peptide.



Western blot analysis of mouse cells using GAD-65/67 Polyclonal Antibody



Immunohistochemistry analysis of paraffin-embedded human lung carcinoma tissue, using GAD1/2 Antibody. The picture on the right is blocked with the synthesized peptide.



Western blot analysis of various cells using GAD-65/67 Polyclonal Antibody

This product is suitable for in-vitro studies under the RESEARCH USE ONLY [RUO] licence. This product must not be used as for diagnostic or other medical purposes.  
St John's Laboratory Ltd, Knowledge Dock Business Centre, University Way, London, E16 2RD | Tel: 0208 223 3081