

Anti-GABRG1 antibody (30-110 N-Term) (STJ93191)

STJ93191

GENERAL INFORMATION

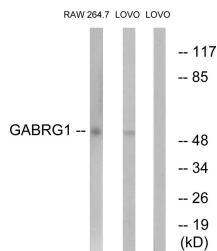
Product Type	Primary antibodies
Short Description	Rabbit polyclonal antibody anti-Gamma-Aminobutyric Acid Receptor Subunit Gamma-1 (30-110 N-Term) is suitable for use in Western Blot, Immunohistochemistry, Immunofluorescence and ELISA research applications.
Applications	WB, IHC-P, IF-P, ELISA
Host/Source	Rabbit
Reactivity	Human, Mouse, Rat

PRODUCT PROPERTIES

Clonality	Polyclonal
Clone ID	
Concentration	1 mg/mL
Conjugation	Unconjugated
Purification	The antibody was affinity-purified from rabbit anti-serum by affinity-chromatography.
Dilution Range	WB 1:500-1:2000 IHC 1:100-1:300 ELISA 1:20000
Formulation	PBS, 50% Glycerol, 0.5% BSA and 0.02% Sodium Azide.
Isotype	IgG
Storage Instruction	Store at -20°C for up to 1 year from the date of receipt, and avoid repeat freeze-thaw cycles.

TARGET INFORMATION

Gene ID	2565
Gene Symbol	GABRG1
Uniprot ID	GBRG1_HUMAN
Immunogen Region	The antiserum was produced against synthesized peptide derived from human GABRG1 at amino acid range 11-60 30-110 N-Term
Specificity	GABRG1 polyclonal antibody (Gamma-Aminobutyric Acid Receptor Subunit Gamma-1) binds to endogenous Gamma-Aminobutyric Acid Receptor Subunit Gamma-1 at the amino acid region 30-110 N-Term.
Immunogen Sequence	



Western blot analysis of lysates from LOVO and RAW264.7 cells, using GABRG1 Antibody. The lane on the right is blocked with the synthesized peptide.

This product is suitable for in-vitro studies under the RESEARCH USE ONLY [RUO] licence. This product must not be used as for diagnostic or other medical purposes.
St John's Laboratory Ltd, Knowledge Dock Business Centre, University Way, London, E16 2RD | Tel: 0208 223 3081