

Anti-GABRB2 antibody (C-Term) (STJ93190)

STJ93190

GENERAL INFORMATION

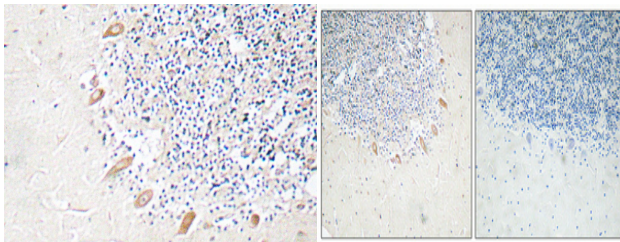
Product Type	Primary antibodies
Short Description	Rabbit polyclonal antibody anti-Gamma-Aminobutyric Acid Receptor Subunit Beta-2 (C-Term) is suitable for use in Western Blot, Immunohistochemistry, Immunofluorescence and ELISA research applications.
Applications	WB, IHC-P, IF-P, ELISA
Host/Source	Rabbit
Reactivity	Human, Mouse, Rat

PRODUCT PROPERTIES

Clonality	Polyclonal
Clone ID	
Concentration	1 mg/mL
Conjugation	Unconjugated
Purification	The antibody was affinity-purified from rabbit anti-serum by affinity-chromatography.
Dilution Range	WB 1:500-2000 IHC 1:100-1:300 ELISA 1:40000
Formulation	PBS, 50% Glycerol, 0.5% BSA and 0.02% Sodium Azide.
Isotype	IgG
Storage Instruction	Store at -20°C for up to 1 year from the date of receipt, and avoid repeat freeze-thaw cycles.

TARGET INFORMATION

Gene ID	2561
Gene Symbol	GABRB2
Uniprot ID	GBRB2_HUMAN
Immunogen	The antiserum was produced against synthesized peptide derived from human GABAA Rbeta2 at amino acid range 382-431
Immunogen Region	C-Term
Specificity	GABRB2 polyclonal antibody (Gamma-Aminobutyric Acid Receptor Subunit Beta-2) binds to endogenous Gamma-Aminobutyric Acid Receptor Subunit Beta-2 at the amino acid region C-Term.
Immunogen Sequence	



Immunohistochemistry analysis of GABAA R Beta 2 antibody in paraffin-embedded human brain tissue.

Immunohistochemical analysis of paraffin-embedded Human brain. Antibody was diluted at 1:100 (4°C overnight). High-pressure and temperature Tris-EDTA, pH8.0 was used for antigen retrieval. Negative control (right) obtained from antibody was pre-absorbed by immunogen peptide.

This product is suitable for in-vitro studies under the RESEARCH USE ONLY [RUO] licence. This product must not be used as for diagnostic or other medical purposes.
St John's Laboratory Ltd, Knowledge Dock Business Centre, University Way, London, E16 2RD | Tel: 0208 223 3081