

Anti-GABRB1 antibody (370-450) (STJ93189)

STJ93189

GENERAL INFORMATION

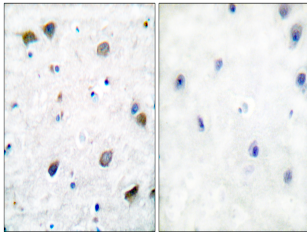
Product Type	Primary antibodies
Short Description	Rabbit polyclonal antibody anti-Gamma-Aminobutyric Acid Receptor Subunit Beta-1 (370-450) is suitable for use in Immunohistochemistry, Immunofluorescence, Western Blot and ELISA research applications.
Applications	IHC-P, IF-P, WB, ELISA
Host/Source	Rabbit
Reactivity	Human, Mouse, Rat

PRODUCT PROPERTIES

Clonality	Polyclonal
Clone ID	
Concentration	1 mg/mL
Conjugation	Unconjugated
Purification	The antibody was affinity-purified from rabbit anti-serum by affinity-chromatography.
Dilution Range	WB 1:500-2000 IHC 1:100-1:300 ELISA 1:40000
Formulation	PBS, 50% Glycerol, 0.5% BSA and 0.02% Sodium Azide.
Isotype	IgG
Storage Instruction	Store at -20°C for up to 1 year from the date of receipt, and avoid repeat freeze-thaw cycles.

TARGET INFORMATION

Gene ID	2560
Gene Symbol	GABRB1
Uniprot ID	GBRB1_HUMAN
Immunogen	The antiserum was produced against synthesized peptide derived from human GABA-RB at amino acid range 401-450
Immunogen Region	370-450
Specificity	GABRB1 polyclonal antibody (Gamma-Aminobutyric Acid Receptor Subunit Beta-1) binds to endogenous Gamma-Aminobutyric Acid Receptor Subunit Beta-1 at the amino acid region 370-450.
Immunogen Sequence	



Immunohistochemistry analysis of paraffin-embedded human brain tissue, using GABA-RB Antibody. The picture on the right is blocked with the synthesized peptide.