

## Anti-GABRA6 antibody (30-110 Internal) (STJ93188)

STJ93188

### GENERAL INFORMATION

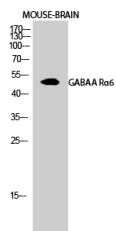
|                          |   |
|--------------------------|---|
| <b>Product Type</b>      | Primary antibodies  |
| <b>Short Description</b> | Rabbit polyclonal antibody anti-Gamma-Aminobutyric Acid Receptor Subunit Alpha-6 (30-110 Internal) is suitable for use in Western Blot and ELISA research applications. |
| <b>Applications</b>      | WB, ELISA   |
| <b>Host/Source</b>       | Rabbit  |
| <b>Reactivity</b>        | Human, Mouse, Rat   |

### PRODUCT PROPERTIES

|                            |  |
|----------------------------|--|
| <b>Clonality</b>           | Polyclonal   |
| <b>Clone ID</b>            |  |
| <b>Concentration</b>       | 1 mg/mL  |
| <b>Conjugation</b>         | Unconjugated   |
| <b>Purification</b>        | The antibody was affinity-purified from rabbit anti-serum by affinity-chromatography.          |
| <b>Dilution</b>            | WB 1:500-1:2000  |
| <b>Range</b>               | ELISA 1:40000  |
| <b>Formulation</b>         | PBS, 50% Glycerol, 0.5% BSA and 0.02% Sodium Azide.  |
| <b>Isotype</b>             | IgG  |
| <b>Storage Instruction</b> | Store at -20°C for up to 1 year from the date of receipt, and avoid repeat freeze-thaw cycles. |

### TARGET INFORMATION

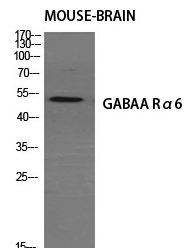
|                           |  |
|---------------------------|--|
| <b>Gene ID</b>            | 2559   |
| <b>Gene Symbol</b>        | GABRA6   |
| <b>Uniprot ID</b>         | GBRA6_HUMAN  |
| <b>Immunogen</b>          | The antiserum was produced against synthesized peptide derived from human GABRA6 at amino acid range 61-110  |
| <b>Immunogen Region</b>   | 30-110 Internal  |
| <b>Specificity</b>        | GABRA6 polyclonal antibody (Gamma-Aminobutyric Acid Receptor Subunit Alpha-6) binds to endogenous Gamma-Aminobutyric Acid Receptor Subunit Alpha-6 at the amino acid region 30-110 Internal. |
| <b>Immunogen Sequence</b> |  |



Western blot analysis of mouse brain cells using GABAA R Alpha 6 Polyclonal Antibody diluted at 1: 500



Western blot analysis of lysates from HeLa and Jurkat cells, using GABRA6 Antibody. The lane on the right is blocked with the synthesized peptide.



Western blot analysis of various cells using GABAA R Alpha 6 Polyclonal Antibody diluted at 1: 500