

## Anti-GABRA4 antibody (50-130 Internal) (STJ93187)

STJ93187

### GENERAL INFORMATION

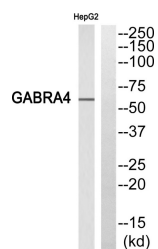
<b>Product Type</b>	Primary antibodies
<b>Short Description</b>	Rabbit polyclonal antibody anti-Gamma-Aminobutyric Acid Receptor Subunit Alpha-4 (50-130 Internal) is suitable for use in Western Blot and ELISA research applications.
<b>Applications</b>	WB, ELISA
<b>Host/Source</b>	Rabbit
<b>Reactivity</b>	Human, Mouse, Rat

### PRODUCT PROPERTIES

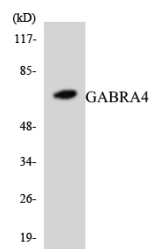
<b>Clonality</b>	Polyclonal
<b>Clone ID</b>	
<b>Concentration</b>	1 mg/mL
<b>Conjugation</b>	Unconjugated
<b>Purification</b>	The antibody was affinity-purified from rabbit anti-serum by affinity-chromatography.
<b>Dilution</b>	WB 1:500-1:2000
<b>Range</b>	ELISA 1:40000
<b>Formulation</b>	PBS, 50% Glycerol, 0.5% BSA and 0.02% Sodium Azide.
<b>Isotype</b>	IgG
<b>Storage</b>	Store at -20°C for up to 1 year from the date of receipt, and avoid repeat freeze-thaw cycles.
<b>Instruction</b>	

### TARGET INFORMATION

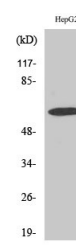
<b>Gene ID</b>	2557
<b>Gene Symbol</b>	GABRA4
<b>Uniprot ID</b>	GBRA4_HUMAN
<b>Immunogen</b>	The antiserum was produced against synthesized peptide derived from human GABRA4 at amino acid range 81-130
<b>Immunogen Region</b>	50-130 Internal
<b>Specificity</b>	GABRA4 polyclonal antibody (Gamma-Aminobutyric Acid Receptor Subunit Alpha-4) binds to endogenous Gamma-Aminobutyric Acid Receptor Subunit Alpha-4 at the amino acid region 50-130 Internal.
<b>Immunogen Sequence</b>	



Western blot analysis of GABRA4 Antibody. The lane on the right is blocked with the GABRA4 peptide.



Western blot analysis of the lysates from COLO205 cells using GABRA4 antibody.



Western blot analysis of various cells using GABRA4 Polyclonal Antibody diluted at 1:1000

This product is suitable for in-vitro studies under the RESEARCH USE ONLY [RUO] licence. This product must not be used as for diagnostic or other medical purposes.  
 St John's Laboratory Ltd, Knowledge Dock Business Centre, University Way, London, E16 2RD | Tel: 0208 223 3081