

## Anti-SLC6A1 antibody (350-430 Internal) (STJ93184)

STJ93184

### GENERAL INFORMATION

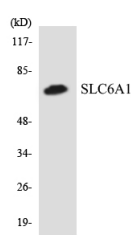
<b>Product Type</b>	Primary antibodies
<b>Short Description</b>	Rabbit polyclonal antibody anti-Sodium-And Chloride-Dependent Gaba Transporter 1 (350-430 Internal) is suitable for use in Western Blot and ELISA research applications.
<b>Applications</b>	WB, ELISA
<b>Host/Source</b>	Rabbit
<b>Reactivity</b>	Human, Mouse, Rat

### PRODUCT PROPERTIES

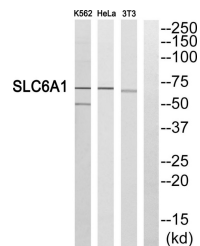
<b>Clonality</b>	Polyclonal
<b>Clone ID</b>	
<b>Concentration</b>	1 mg/mL
<b>Conjugation</b>	Unconjugated
<b>Purification</b>	The antibody was affinity-purified from rabbit anti-serum by affinity-chromatography.
<b>Dilution</b>	WB 1:500-1:2000
<b>Range</b>	ELISA 1:40000
<b>Formulation</b>	PBS, 50% Glycerol, 0.5% BSA and 0.02% Sodium Azide.
<b>Isotype</b>	IgG
<b>Storage Instruction</b>	Store at -20°C for up to 1 year from the date of receipt, and avoid repeat freeze-thaw cycles.

### TARGET INFORMATION

<b>Gene ID</b>	6529
<b>Gene Symbol</b>	SLC6A1
<b>Uniprot ID</b>	SC6A1_HUMAN
<b>Immunogen</b>	The antiserum was produced against synthesized peptide derived from human SLC6A1 at amino acid range 381-430
<b>Immunogen Region</b>	350-430 Internal
<b>Specificity</b>	SLC6A1 polyclonal antibody (Sodium-And Chloride-Dependent Gaba Transporter 1) binds to endogenous Sodium-And Chloride-Dependent Gaba Transporter 1 at the amino acid region 350-430 Internal.
<b>Immunogen Sequence</b>	



Western blot analysis of the lysates from HeLa cells using SLC6A1 antibody.



Western blot analysis of SLC6A1 Antibody. The lane on the right is blocked with the SLC6A1 peptide.

This product is suitable for in-vitro studies under the RESEARCH USE ONLY [RUO] licence. This product must not be used as for diagnostic or other medical purposes.  
 St John's Laboratory Ltd, Knowledge Dock Business Centre, University Way, London, E16 2RD | Tel: 0208 223 3081