

Anti-GAB2 antibody (580-660) (STJ93182)

STJ93182

GENERAL INFORMATION

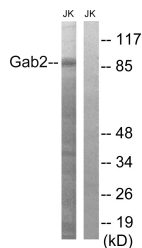
Product Type	Primary antibodies
Short Description	Rabbit polyclonal antibody anti-Grb2-Associated-Binding Protein 2 (580-660) is suitable for use in Western Blot and ELISA research applications.
Applications	WB, ELISA
Host/Source	Rabbit
Reactivity	Human, Mouse, Rat

PRODUCT PROPERTIES

Clonality	Polyclonal
Clone ID	
Concentration	1 mg/mL
Conjugation	Unconjugated
Purification	The antibody was affinity-purified from rabbit anti-serum by affinity-chromatography.
Dilution Range	WB 1:500-1:2000 ELISA 1:40000
Formulation	PBS, 50% Glycerol, 0.5% BSA and 0.02% Sodium Azide.
Isotype	IgG
Storage	Store at -20°C for up to 1 year from the date of receipt, and avoid repeat freeze-thaw cycles.
Instruction	

TARGET INFORMATION

Gene ID	9846
Gene Symbol	GAB2
Uniprot ID	GAB2_HUMAN
Immunogen	The antiserum was produced against synthesized peptide derived from human Gab2 at amino acid range 609-658
Immunogen Region	580-660
Specificity	GAB2 polyclonal antibody (Grb2-Associated-Binding Protein 2) binds to endogenous Grb2-Associated-Binding Protein 2 at the amino acid region 580-660.
Immunogen Sequence	



Western blot analysis of lysates from Jurkat cells, using Gab2 Antibody. The lane on the right is blocked with the synthesized peptide.