

Anti-GAB2 antibody (210-290 Internal) (STJ93181)

STJ93181

GENERAL INFORMATION

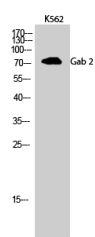
Product Type	Primary antibodies
Short Description	Rabbit polyclonal antibody anti-Grb2-Associated-Binding Protein 2 (210-290 Internal) is suitable for use in Western Blot and ELISA research applications.
Applications	WB, ELISA
Host/Source	Rabbit
Reactivity	Human, Mouse, Rat

PRODUCT PROPERTIES

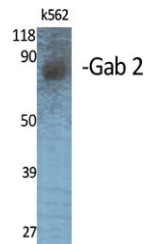
Clonality	Polyclonal
Clone ID	
Concentration	1 mg/mL
Conjugation	Unconjugated
Purification	The antibody was affinity-purified from rabbit anti-serum by affinity-chromatography.
Dilution Range	WB 1:500-1:2000 ELISA 1:10000
Formulation	PBS, 50% Glycerol, 0.5% BSA and 0.02% Sodium Azide.
Isotype	IgG
Storage	Store at -20°C for up to 1 year from the date of receipt, and avoid repeat freeze-thaw cycles.
Instruction	

TARGET INFORMATION

Gene ID	9846
Gene Symbol	GAB2
Uniprot ID	GAB2_HUMAN
Immunogen	Synthesized peptide derived from Gab 2. at amino acid range: 210-290
Immunogen Region	210-290 Internal
Specificity	GAB2 polyclonal antibody (Grb2-Associated-Binding Protein 2) binds to endogenous Grb2-Associated-Binding Protein 2 at the amino acid region 210-290 Internal.
Immunogen Sequence	



Western blot analysis of K562 cells using Gab 2 Polyclonal Antibody



Western blot analysis of various cells using Gab 2 Polyclonal Antibody

This product is suitable for in-vitro studies under the RESEARCH USE ONLY [RUO] licence. This product must not be used as for diagnostic or other medical purposes.
 St John's Laboratory Ltd, Knowledge Dock Business Centre, University Way, London, E16 2RD | Tel: 0208 223 3081