

Anti-G3BP2 antibody (420-500 C-Term) (STJ93174)

STJ93174

GENERAL INFORMATION

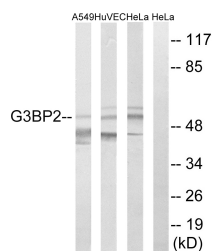
Product Type	Primary antibodies
Short Description	Rabbit polyclonal antibody anti-Ras Gtpase-Activating Protein-Binding Protein 2 (420-500 C-Term) is suitable for use in Western Blot and ELISA research applications.
Applications	WB, ELISA
Host/Source	Rabbit
Reactivity	Human, Mouse

PRODUCT PROPERTIES

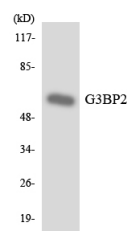
Clonality	Polyclonal
Clone ID	
Concentration	1 mg/mL
Conjugation	Unconjugated
Purification	The antibody was affinity-purified from rabbit anti-serum by affinity-chromatography.
Dilution Range	WB 1:500-1:2000 ELISA 1:10000
Formulation	PBS, 50% Glycerol, 0.5% BSA and 0.02% Sodium Azide.
Isotype	IgG
Storage	Store at -20°C for up to 1 year from the date of receipt, and avoid repeat freeze-thaw cycles.
Instruction	

TARGET INFORMATION

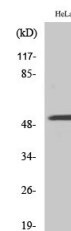
Gene ID	9908
Gene Symbol	G3BP2
Uniprot ID	G3BP2_HUMAN
Immunogen	The antiserum was produced against synthesized peptide derived from human G3BP2 at amino acid range 433-482
Immunogen Region	420-500 C-Term
Specificity	G3BP2 polyclonal antibody (Ras Gtpase-Activating Protein-Binding Protein 2) binds to endogenous Ras Gtpase-Activating Protein-Binding Protein 2 at the amino acid region 420-500 C-Term.
Immunogen Sequence	



Western blot analysis of lysates from HeLa, HUVEC, and A549 cells, using G3BP2 Antibody. The lane on the right is blocked with the synthesized peptide.



Western blot analysis of the lysates from HeLa cells using G3BP2 antibody.



Western blot analysis of various cells using G3BP2 Polyclonal Antibody.