

Anti-G3BP1 antibody (170-250) (STJ93173)

STJ93173

GENERAL INFORMATION

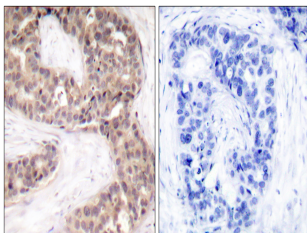
Product Type	Primary antibodies
Short Description	Rabbit polyclonal antibody anti-Ras Gtpase-Activating Protein-Binding Protein 1 (170-250) is suitable for use in Western Blot, Immunohistochemistry, Immunofluorescence and ELISA research applications.
Applications	WB, IHC-P, IF-P, ELISA
Host/Source	Rabbit
Reactivity	Human, Mouse, Monkey

PRODUCT PROPERTIES

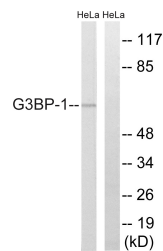
Clonality	Polyclonal
Clone ID	
Concentration	1 mg/mL
Conjugation	Unconjugated
Purification	The antibody was affinity-purified from rabbit anti-serum by affinity-chromatography.
Dilution Range	WB 1:500-1:2000 IHC 1:100-1:300 ELISA 1:10000
Formulation	PBS, 50% Glycerol, 0.5% BSA and 0.02% Sodium Azide.
Isotype	IgG
Storage Instruction	Store at -20°C for up to 1 year from the date of receipt, and avoid repeat freeze-thaw cycles.

TARGET INFORMATION

Gene ID	10146
Gene Symbol	G3BP1
Uniprot ID	G3BP1_HUMAN
Immunogen	The antiserum was produced against synthesized peptide derived from human G3BP-1 at amino acid range 199-248
Immunogen Region	170-250
Specificity	G3BP1 polyclonal antibody (Ras Gtpase-Activating Protein-Binding Protein 1) binds to endogenous Ras Gtpase-Activating Protein-Binding Protein 1 at the amino acid region 170-250.
Immunogen Sequence	



Immunohistochemistry analysis of paraffin-embedded human breast carcinoma tissue, using G3BP-1 Antibody. The picture on the right is blocked with the synthesized peptide.



Western blot analysis of lysates from HeLa cells, using G3BP-1 Antibody. The lane on the right is blocked with the synthesized peptide.



Western blot analysis of various cells using G3BP1 Polyclonal Antibody

This product is suitable for in-vitro studies under the RESEARCH USE ONLY [RUO] licence. This product must not be used as for diagnostic or other medical purposes.
St John's Laboratory Ltd, Knowledge Dock Business Centre, University Way, London, E16 2RD | Tel: 0208 223 3081