

Anti-FYB1 antibody (620-700 C-Term) (STJ93169)

STJ93169

GENERAL INFORMATION

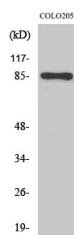
Product Type	Primary antibodies
Short Description	Rabbit polyclonal antibody anti-Fyn-Binding Protein 1 (620-700 C-Term) is suitable for use in Western Blot and ELISA research applications.
Applications	WB, ELISA
Host/Source	Rabbit
Reactivity	Human, Mouse, Rat

PRODUCT PROPERTIES

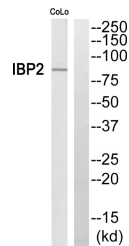
Clonality	Polyclonal
Clone ID	
Concentration	1 mg/mL
Conjugation	Unconjugated
Purification	The antibody was affinity-purified from rabbit anti-serum by affinity-chromatography.
Dilution Range	WB 1:500-1:2000 ELISA 1:40000
Formulation	PBS, 50% Glycerol, 0.5% BSA and 0.02% Sodium Azide.
Isotype	IgG
Storage Instruction	Store at -20°C for up to 1 year from the date of receipt, and avoid repeat freeze-thaw cycles.

TARGET INFORMATION

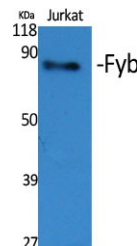
Gene ID	2533
Gene Symbol	FYB1
Uniprot ID	FYB1_HUMAN
Immunogen	Synthesized peptide derived from Fyb. at amino acid range: 620-700
Immunogen Region	620-700 C-Term
Specificity	FYB1 polyclonal antibody (Fyn-Binding Protein 1) binds to endogenous Fyn-Binding Protein 1 at the amino acid region 620-700 C-Term.
Immunogen Sequence	



Western blot analysis of COLO205 cells using Fyb Polyclonal Antibody



Western blot analysis of Fyb Antibody. The lane on the right is blocked with the Fyb peptide.



Western blot analysis of various cells using Fyb Polyclonal Antibody

This product is suitable for in-vitro studies under the RESEARCH USE ONLY [RUO] licence. This product must not be used as for diagnostic or other medical purposes.
St John's Laboratory Ltd, Knowledge Dock Business Centre, University Way, London, E16 2RD | Tel: 0208 223 3081