

Anti-GFUS antibody (190-270 C-Term) (STJ93167)

STJ93167

GENERAL INFORMATION

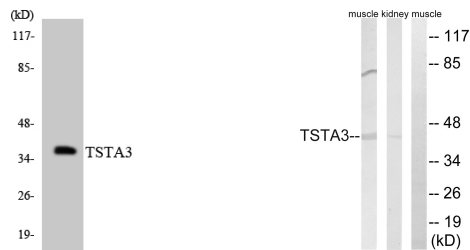
Product Type	Primary antibodies
Short Description	Rabbit polyclonal antibody anti-Gdp-L-Fucose Synthase (190-270 C-Term) is suitable for use in Western Blot and ELISA research applications.
Applications	WB, ELISA
Host/Source	Rabbit
Reactivity	Human, Mouse, Rat

PRODUCT PROPERTIES

Clonality	Polyclonal
Clone ID	
Concentration	1 mg/mL
Conjugation	Unconjugated
Purification	The antibody was affinity-purified from rabbit anti-serum by affinity-chromatography.
Dilution Range	WB 1:500-1:2000 ELISA 1:20000
Formulation	PBS, 50% Glycerol, 0.5% BSA and 0.02% Sodium Azide.
Isotype	IgG
Storage Instruction	Store at -20°C for up to 1 year from the date of receipt, and avoid repeat freeze-thaw cycles.

TARGET INFORMATION

Gene ID	7264
Gene Symbol	GFUS
Uniprot ID	FCL_HUMAN
Immunogen	The antiserum was produced against synthesized peptide derived from human TSTA3 at amino acid range 221-270
Immunogen Region	190-270 C-Term
Specificity	GFUS polyclonal antibody (Gdp-L-Fucose Synthase) binds to endogenous Gdp-L-Fucose Synthase at the amino acid region 190-270 C-Term.
Immunogen Sequence	



Western blot analysis of the lysates from COLO205 cells using TSTA3 antibody.

Western blot analysis of lysates from rat kidney and rat muscle cells, using TSTA3 Antibody. The lane on the right is blocked with the synthesized peptide.

This product is suitable for in-vitro studies under the RESEARCH USE ONLY [RUO] licence. This product must not be used as for diagnostic or other medical purposes.
St John's Laboratory Ltd, Knowledge Dock Business Centre, University Way, London, E16 2RD | Tel: 0208 223 3081