

## Anti-FOLR1 antibody (10-90 Internal) (STJ93159)

STJ93159

### GENERAL INFORMATION

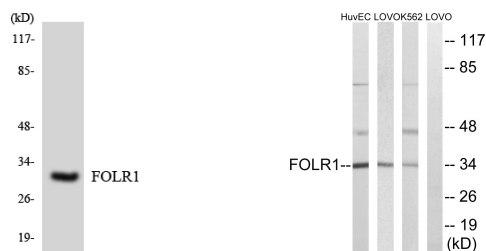
<b>Product Type</b>	Primary antibodies
<b>Short Description</b>	Rabbit polyclonal antibody anti-Folate Receptor Alpha (10-90 Internal) is suitable for use in Western Blot and ELISA research applications.
<b>Applications</b>	WB, ELISA
<b>Host/Source</b>	Rabbit
<b>Reactivity</b>	Human, Mouse, Rat

### PRODUCT PROPERTIES

<b>Clonality</b>	Polyclonal
<b>Clone ID</b>	
<b>Concentration</b>	1 mg/mL
<b>Conjugation</b>	Unconjugated
<b>Purification</b>	The antibody was affinity-purified from rabbit anti-serum by affinity-chromatography.
<b>Dilution Range</b>	WB 1:500-1:2000 ELISA 1:5000
<b>Formulation</b>	PBS, 50% Glycerol, 0.5% BSA and 0.02% Sodium Azide.
<b>Isotype</b>	IgG
<b>Storage Instruction</b>	Store at -20°C for up to 1 year from the date of receipt, and avoid repeat freeze-thaw cycles.

### TARGET INFORMATION

<b>Gene ID</b>	2348
<b>Gene Symbol</b>	FOLR1
<b>Uniprot ID</b>	FOLR1_HUMAN
<b>Immunogen</b>	The antiserum was produced against synthesized peptide derived from human FOLR1 at amino acid range 41-90
<b>Immunogen Region</b>	10-90 Internal
<b>Specificity</b>	FOLR1 polyclonal antibody (Folate Receptor Alpha) binds to endogenous Folate Receptor Alpha at the amino acid region 10-90 Internal.
<b>Immunogen Sequence</b>	



Western blot analysis of the lysates from HepG2 cells using FOLR1 antibody.

Western blot analysis of lysates from K562, LOVO, and HUVEC cells, using FOLR1 Antibody. The lane on the right is blocked with the synthesized peptide.

This product is suitable for in-vitro studies under the RESEARCH USE ONLY [RUO] licence. This product must not be used as for diagnostic or other medical purposes.  
St John's Laboratory Ltd, Knowledge Dock Business Centre, University Way, London, E16 2RD | Tel: 0208 223 3081