

Anti-FRS3 antibody (160-240 Internal) (STJ93158)

STJ93158

GENERAL INFORMATION

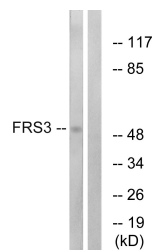
Product Type	Primary antibodies
Short Description	Rabbit polyclonal antibody anti-Fibroblast Growth Factor Receptor Substrate 3 (160-240 Internal) is suitable for use in Western Blot and ELISA research applications.
Applications	WB, ELISA
Host/Source	Rabbit
Reactivity	Human, Monkey

PRODUCT PROPERTIES

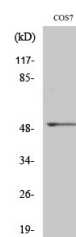
Clonality	Polyclonal
Clone ID	
Concentration	1 mg/mL
Conjugation	Unconjugated
Purification	The antibody was affinity-purified from rabbit anti-serum by affinity-chromatography.
Dilution Range	WB 1:500-1:2000 ELISA 1:40000
Formulation	PBS, 50% Glycerol, 0.5% BSA and 0.02% Sodium Azide.
Isotype	IgG
Storage Instruction	Store at -20°C for up to 1 year from the date of receipt, and avoid repeat freeze-thaw cycles.

TARGET INFORMATION

Gene ID	10817
Gene Symbol	FRS3
Uniprot ID	FRS3_HUMAN
Immunogen	The antiserum was produced against synthesized peptide derived from human FRS3 at amino acid range 191-240
Immunogen Region	160-240 Internal
Specificity	FRS3 polyclonal antibody (Fibroblast Growth Factor Receptor Substrate 3) binds to endogenous Fibroblast Growth Factor Receptor Substrate 3 at the amino acid region 160-240 Internal.
Immunogen Sequence	



Western blot analysis of lysates from COS7 cells, using FRS3 Antibody. The lane on the right is blocked with the synthesized peptide.



Western blot analysis of various cells using FRS3 Polyclonal Antibody