

## Anti-FRS2 antibody (140-220) (STJ93156)

STJ93156

### GENERAL INFORMATION

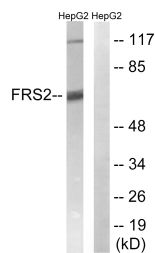
<b>Product Type</b>	Primary antibodies
<b>Short Description</b>	Rabbit polyclonal antibody anti-Fibroblast Growth Factor Receptor Substrate 2 (140-220) is suitable for use in Western Blot and ELISA research applications.
<b>Applications</b>	WB, ELISA
<b>Host/Source</b>	Rabbit
<b>Reactivity</b>	Human, Mouse

### PRODUCT PROPERTIES

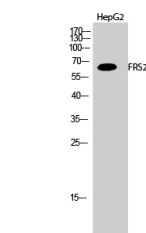
<b>Clonality</b>	Polyclonal
<b>Clone ID</b>	
<b>Concentration</b>	1 mg/mL
<b>Conjugation</b>	Unconjugated
<b>Purification</b>	The antibody was affinity-purified from rabbit anti-serum by affinity-chromatography.
<b>Dilution Range</b>	WB 1:500-1:2000 ELISA 1:40000
<b>Formulation</b>	PBS, 50% Glycerol, 0.5% BSA and 0.02% Sodium Azide.
<b>Isotype</b>	IgG
<b>Storage</b>	Store at -20°C for up to 1 year from the date of receipt, and avoid repeat freeze-thaw cycles.
<b>Instruction</b>	

### TARGET INFORMATION

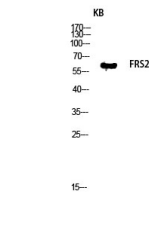
<b>Gene ID</b>	10818
<b>Gene Symbol</b>	FRS2
<b>Uniprot ID</b>	FRS2_HUMAN
<b>Immunogen</b>	The antiserum was produced against synthesized peptide derived from human FRS2 at amino acid range 162-211
<b>Immunogen Region</b>	140-220
<b>Specificity</b>	FRS2 polyclonal antibody (Fibroblast Growth Factor Receptor Substrate 2) binds to endogenous Fibroblast Growth Factor Receptor Substrate 2 at the amino acid region 140-220.
<b>Immunogen Sequence</b>	



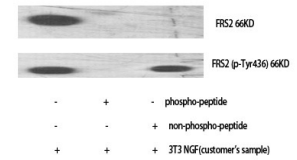
Western blot analysis of lysates from HepG2 cells, using FRS2 Antibody. The lane on the right is blocked with the synthesized peptide.



Western blot analysis of HepG2 cells using FRS2 Polyclonal Antibody diluted at 1: 1000



Western blot analysis of KB lysis using FRS2 antibody. Antibody was diluted at 1:1000



Western blot analysis of various cells using FRS2 Polyclonal Antibody diluted at 1: 1000

This product is suitable for in-vitro studies under the RESEARCH USE ONLY [RUO] licence. This product must not be used as for diagnostic or other medical purposes.  
St John's Laboratory Ltd, Knowledge Dock Business Centre, University Way, London, E16 2RD | Tel: 0208 223 3081